



Garfield-Perry Stamp Club

Show and Tell

September 3, 2020

(What are those guys looking at? Our great philatelic show!)

AIR RAID WARNING!

Instructions to Householders in regard to:

BLACKOUT - FRIDAY, DEC. 26, 1941 - 11:10 p. m. to 11:25 p. m.

1. Stay at home, if possible—it is the safest place in an emergency.
2. Turn out or effectively screen all lights immediately on hearing the WARNING signal.
3. Keep off the streets and highways.
4. Do not light matches or show lights outdoors.
5. Keep your dog under control.
6. Avoid unnecessary use of the telephone.
7. Learn how to turn off gas, electric and water.

All persons are required to co-operate and follow above instructions.
Issued by the Buffalo Council of Defense, and the Police and Fire Dept.

CL. 5540

ALFRED V. FREW

Civilian Defense - Police Warden

WWII Is Just Underway

Memories of the Battle of Britain Cause Us to Prepare



Air Raid Warning

Owner Comments

- 19 days after Pearl Harbor
- Country-wide air raid drills
- Air wardens appointed across the United States
- I grew up in Ohio farm country about four miles from small town
- Began Black-Out drills after receiving card
- No electricity – extinguished candles, kerosene lanterns, pulled drapes when siren went off in town
- Warden would drive by to check
- All clear siren meant return to normal
- Practice continued throughout the war



1954 Second Aliyah Issue of Jewish National Fund

Issued Stamp



1954 Second Aliyah Issue of Jewish National Fund

Original artwork signed by Maxim Shamir



Second Aliyah Stamp

Owner Comments

- Stamp commemorates 50th anniversary of start of the second Aliyah (immigration from diaspora to Israel)
- Immigration years 1904-1914
- About 40,000 Jews, mainly from Russia to southern Syria
- Revived Hebrew as spoken language
- 1909 – Established Jaffa suburb that grew into Tel Aviv
- Immigration ended because of WWI



< Previous Lot Next Lot >

Auction: 1028 – The "Wilkin" Collection of British West Africa Postal History and British Africa Stamps from the Vestey Collection

Lot: 327

Nigeria World War I – 1914–18 Censor Mail 1914 (10 Nov.) envelope from Dahomey to Buenos Aires, bearing 1913 5c. and 10c. (2, one creased and one on reverse) tied by "porto-novo/dahomey" double-ring d.s., showing two strikes of straight-line "passed by censor" h.s. in violet (Martin & Walton Type 1) applied in Lagos, one covered by "Found open and Officially Sealed." label on translucent paper and crossed through with red crayon and, on reverse, another strike of the handstamp with Lagos (10.11) and arrival (17.1.15) datestamps; the envelope a fraction soiled. Rare and attractive, the only recorded example in violet. Photo Estimate £ 300–400

Nice WWI Dahomey to Argentina


Sold for £ 500, December 2010 Spink sale

Welcome back Jere Dutt | Logout » My Spink

SPINK WHERE HISTORY IS VALUED
FOUNDED 1666

HOME AUCTIONS LOTS ARCHIVE PRIVATE TREATY DEPARTMENTS MEDIA ABOUT

By Location By Department Prices Realised Saleroom Notices Buying At Auction Selling



< Previous Lot Next Lot >

Auction: 20026 – The Philatelic Collectors' Series Sale – conducted behind closed doors
Lot: 1151

France
Dahomey
1914 (10 Nov.) envelope to Buenos Aires bearing 1913 5c. and 10c. (2, one creased and one on reverse), tied by "porto-novo/dahomey" double ring datestamps, showing two strikes of the straight line "passed by censor" (Martin & Walton type I) applied at Lagos, one covered by "Found open and Officially Sealed" label on translucent paper and crossed through in red crayon, on reverse another strike of the handstamp with Lagos (10.11) and arrival (17.1.15) datestamps; the envelope a fraction soiled. Rare and attractive, the only recorded example in violet. Photo

provenance:
*Wilkin, December 2010

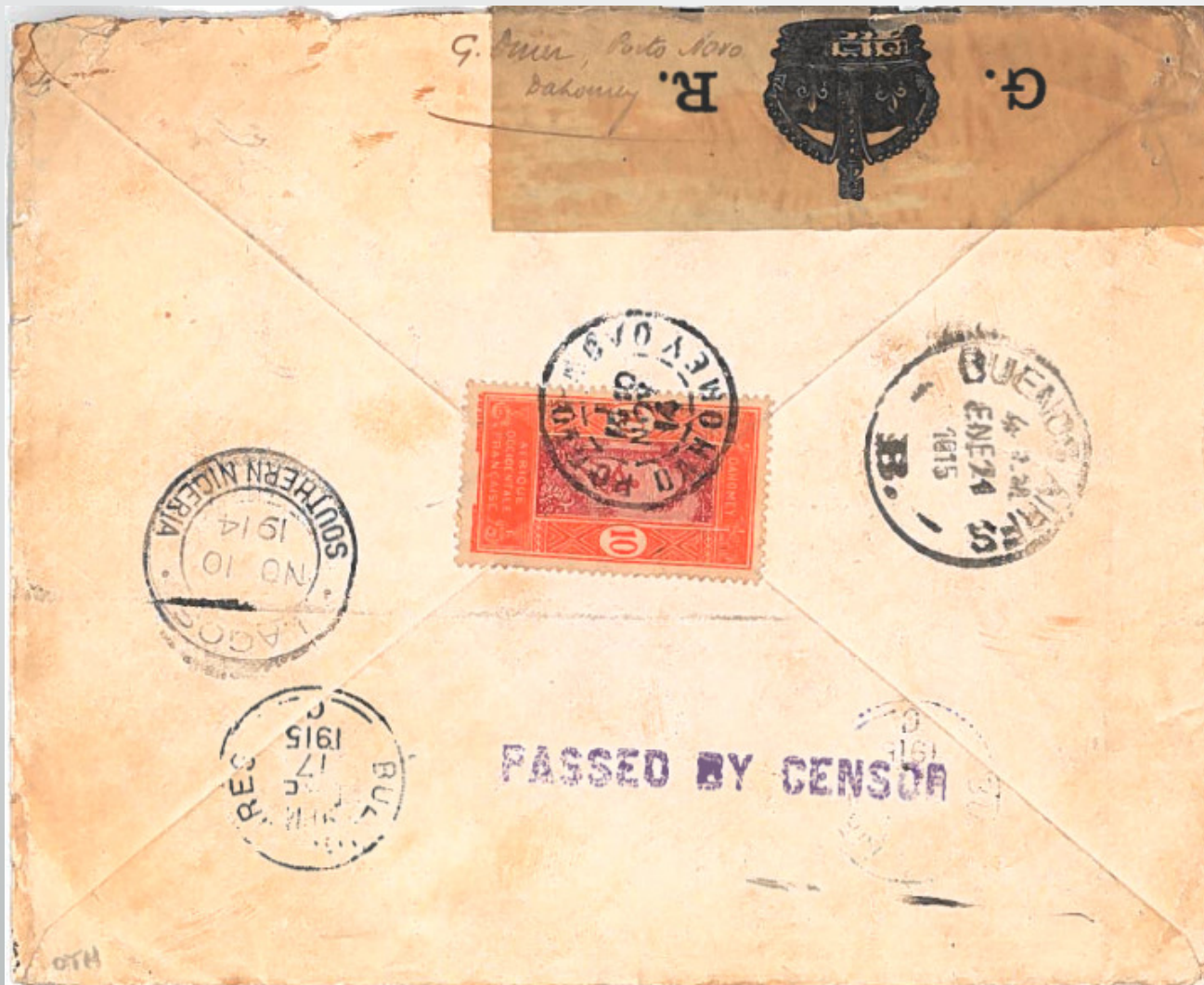
The Same Nice WWI Dahomey to Argentina

Sold for £ 260 more recently to our fellow Garfield-Perry member



The Real
Thing

Sold for £ 260
more recently



Its
Backside

Sold for £ 260
more recently



Dahomey to Argentina


Owner Comments

- Bought it for color of censor marking – only violet one known
- Bargain price compared to 2010 sale
- 25 centimes rate is correct to Argentina
- Mailed from Porto-Novo on 10 Nov 1914
- Received in Lagos same date, then censored in Lagos (three strikes, one under label)
- Arrived in Buenos Aires 17 Jan 1915
- Delivered 24 Jan 1915 (75 days)
- Editor comment: And the destination wasn't a factor when bidding? Yeah, right!



1949 Farum Cachet FDC to Bavaria

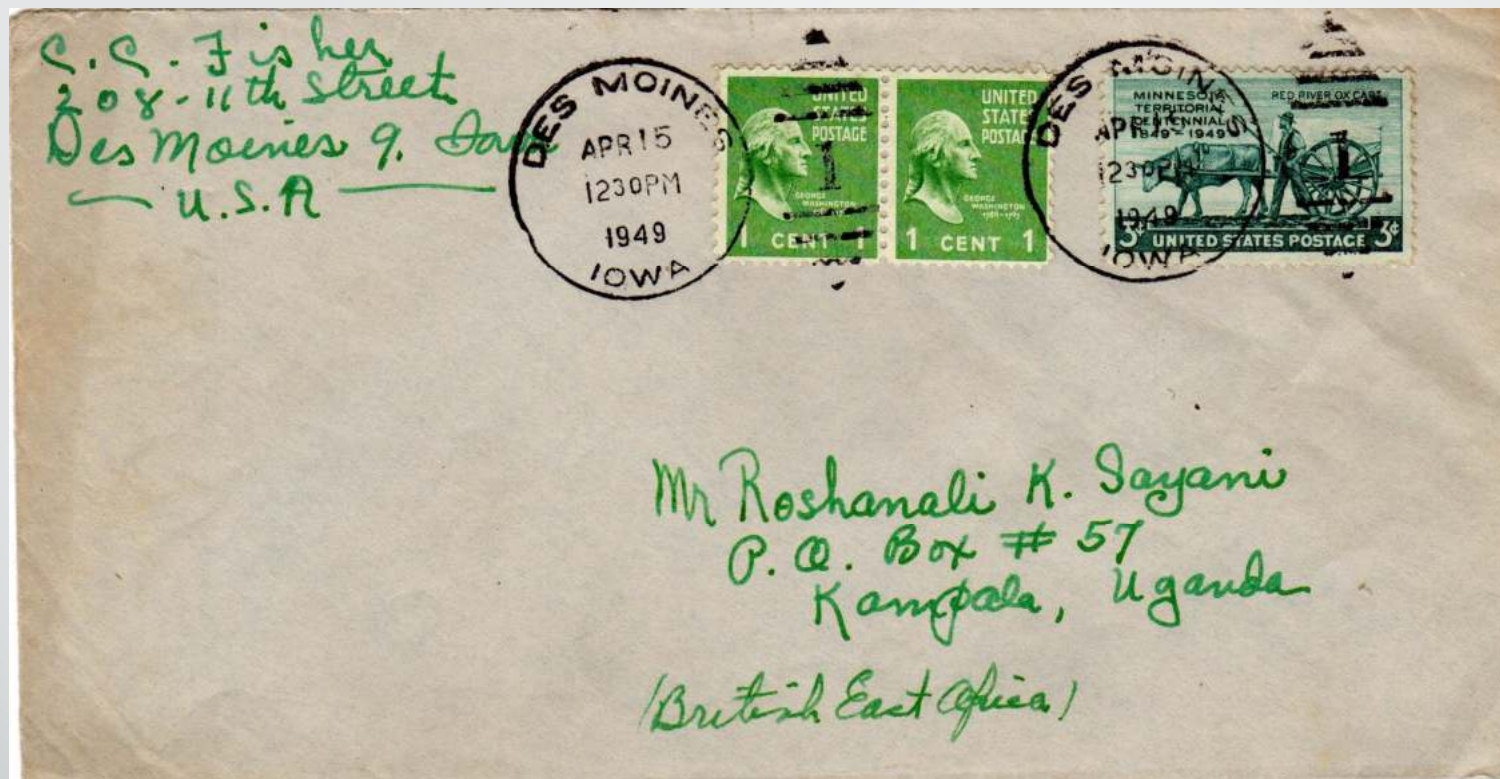
May have been carried by Eastern Air Lines



Farnam FDC to Germany

Owner Comments

- All foreign destination FDCs are unusual
- Some mail was still censored, but this was not
- Nice that all stamps are ox cart stamp, paid the correct air mail rate
- No backstamp, so no evidence that letter was delivered other than it being opened



1949 Use to Uganda

Five cent surface rate to most of the world



1949 Use to Uganda

Owner Comments

- Always disappointed when not all postage is the key stamp, but then it would have been overpaid by one cent
- Really nice Des Moines, IA, handstamps
- On April 15 the ox cart stamp was still the newest commemorative
- Prexies were still the current definitives



1949 Maine to Texas

By way of St. Louis

1949 Maine to Texas

Owner Comments



- Nice auxiliary markings
- Mailed April 2?, 1949 , still newest commemorative
- Canceled Kezar Falls, Maine, a village in Porter, Maine
- 2010 Porter population about 1,500
- No city specified in Texas
- Backstamped St. Louis, MO, 29 Apr 1949
- Probably opened to determine addressee
- This street and number exists in both Dallas and Houston

An active researcher, author, exhibitor and philatelic judge, Gough twice was named the APS Champion of Champions in its annual World Series of Philately: in 1992 for "The Evolution and Use of Adhesives for Postage Due, 1790-1954,"

A Recent Announcement

From the August 31, 2020, *Linn's Stamp News*, front page

APS announces Luff awards to Gough, Kouri, Grant

James Peter Gough, Yamil H. Kouri Jr. and Kenneth Grant are the 2020 recipients of the American Philatelic Society's Luff awards.

The APS presents the John N. Luff awards annually to recognize meritorious contributions to philately by living philatelists.

The announcement from the APS in early August celebrated the achievements of the three recipients.

Gough is being honored with the APS Luff award for distinguished philatelic research.

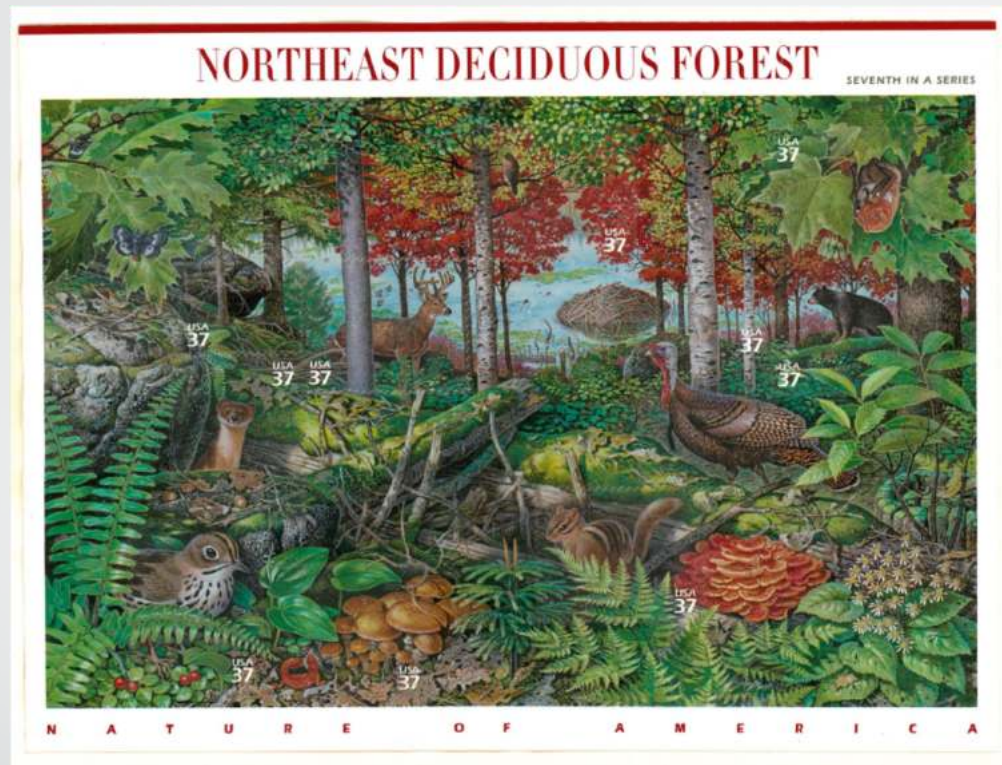
An active researcher, author, exhibitor and philatelic judge, Gough twice was named the APS Champion of Champions in its annual World Series of Philately: in 1992 for "The Evolution and Use of Adhesives for Postage Due, 1790-1954," and in 2013 for "Universal Postal Union and its Impact on Global Postal Service."

His postage due exhibit was also awarded the FIP (International Federation of Philately) grand prix d'honneur at Philexfrance 1999 and FIP felicitations for research.

The UPU exhibit won the grand prix d'exposition at Americas 2008, the grand prix d'exposition at Europhilex 2015, and FIP felicitations for research.

The APS noted that Gough published his first philatelic writing in *Linn's Stamp News* in 1973.

The APS added: "Since then, he has continued to write extensively, including a few of the follow-



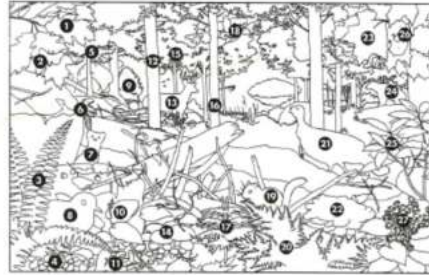
The 2005 Nature of America Sheet

One of a long series

NORTHEAST DECIDUOUS FOREST

Trees that shed their leaves each fall typify the deciduous forests of the northeastern United States. In autumn their vivid colors give these woodlands a unique beauty. The region's temperate climate, with four distinct seasons and ample precipitation, supports a complex forest community of plants and animals.

Mature forests have layers: a canopy of tall trees, an understory of shorter trees, a shrub layer, an herb layer of wildflowers and ferns, and a litter layer of decomposing leaves and wood on the forest floor. This layering, called stratification, allows a variety of plants to share the same habitat. It also provides distinct niches for wildlife, as different animal species forage and find shelter at each level. Wild turkeys and ovenbirds feed and nest on the ground. White-tailed deer browse among the herbs and shrubs. In the canopy, red-shouldered hawks hunt from exposed branches, while nocturnal red bats roost in dense foliage.



- | | | |
|---|--|--|
| 1. Northern Red Oak
<i>Quercus rubra</i> | 10. Canada Mayflower
<i>Maianthemum canadense</i> | 19. Eastern Chipmunk
<i>Tamias striatus</i> |
| 2. Eastern Buckmouth
<i>Hemlockia moss</i> | 11. Red Elk (Eastern Newt)
<i>Pseudoeurycea viridescens</i> | 20. Spiny-tailed Woodpecker
<i>Dryocopus carolinensis</i> |
| 3. Christmas Fern
<i>Adiantum nemorosum</i> | 12. American Beech
<i>Fagus grandifolia</i> | 21. Wild Turkey
<i>Meleagris gallopavo</i> |
| 4. Partridgeberry
<i>Mitella repens</i> | 13. White-tailed Deer
<i>Odocoileus virginianus</i> | 22. Chicken Mushroom
<i>Lactarius stipitatus</i> |
| 5. Eastern Hemlock
<i>Tsuga canadensis</i> | 14. Honey Mushroom
<i>Armillaria mellea</i> | 23. Sugar Maple
<i>Acer saccharum</i> |
| 6. Common Polypody
<i>Polypodium polypodioides</i> | 15. Red Maple
<i>Acer rubrum</i> | 24. Black Bear
<i>Ursus americanus</i> |
| 7. Long-tailed Weasel
<i>Mustela putorius</i> | 16. Paper Birch
<i>Betula papyrifera</i> | 25. American Chestnut sprouts
<i>Castanea dentata</i> |
| 8. Ovenbird
<i>Icterus cinerascens</i> | 17. Ground Pine
<i>Urtica dioica</i> | 26. Eastern Red Bat
<i>Lasiurus borealis</i> |
| 9. Eastern White Pine
<i>Pinus strobus</i> | 18. Red-shouldered Hawk
<i>Buteo lineatus</i> | 27. White Wood Aster
<i>Aster divaricatus</i> |



© 2004 USPS

N A T U R E O F A M E R I C A
THIS SERIES OF STAMPS FEATURES THE BEAUTY AND COMPLEXITY OF PLANT AND ANIMAL COMMUNITIES IN THE UNITED STATES.

The 2005 Nature in America Sheet

Its backside – lots of info about the forest



The 2018 Commemorative Panel for the "O Beautiful" Stamps

A description of how the stamps illustrate the phrases of "America the Beautiful"

O BEAUTIFUL



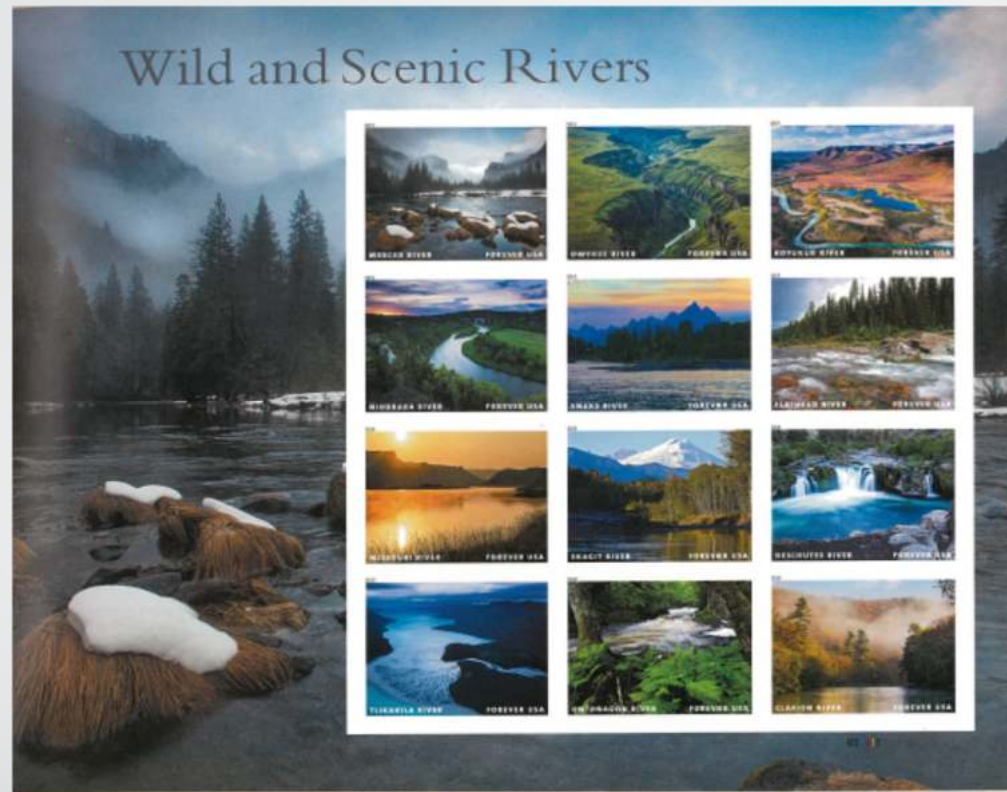
Page 3

Print

Stamps printed by Bureau of Postal Service, Washington, D.C. 20540-0001 / 149 g. 100% / Printed in U.S.A. / © 2008 United States Postal Service

 UNITED STATES

Row by row depicting spacious skies, amber waves
of grain, mountain majesties, the fruited plain and
sea to shining sea



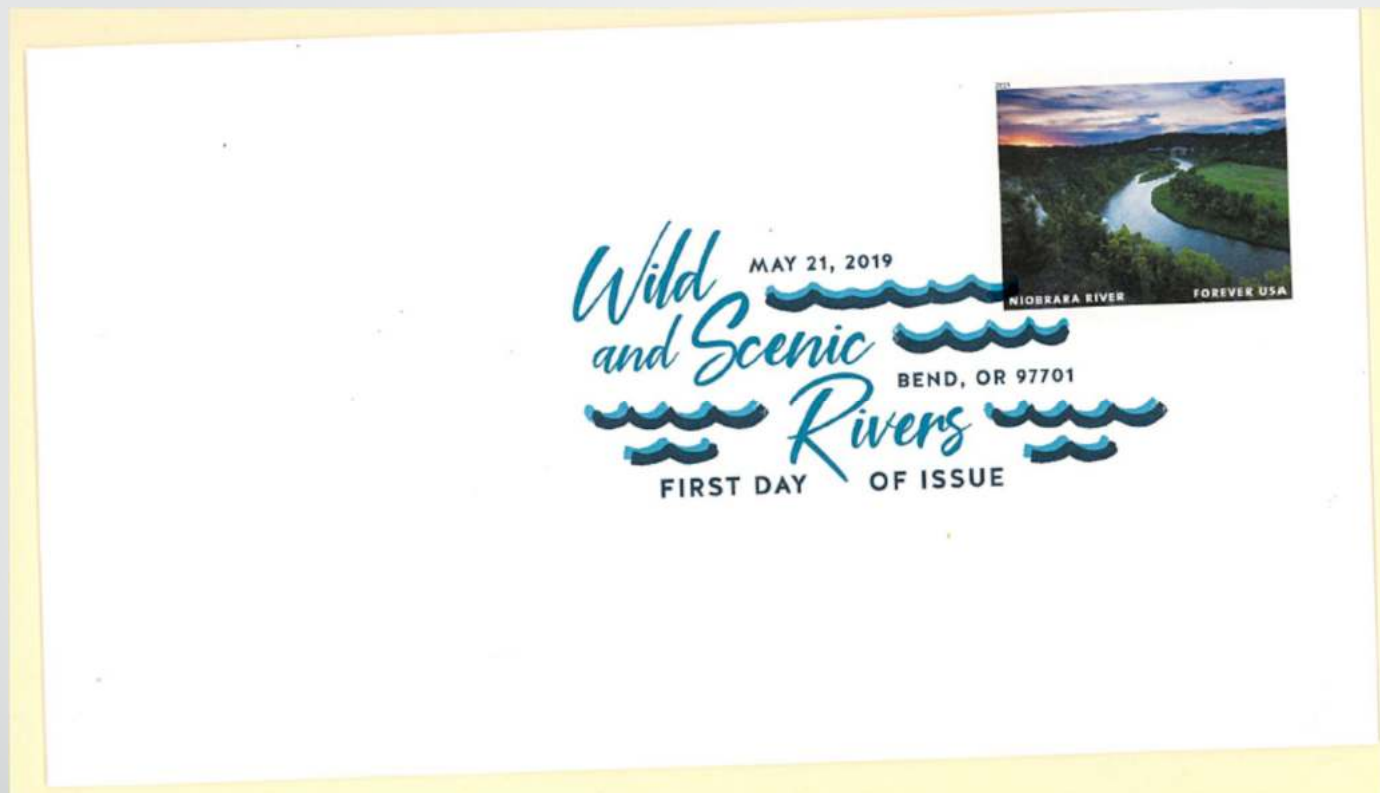
The 2019 Wild and Scenic Rivers Sheet

A dozen beautiful places



More USPS Pretty Pictures

Certainly scenic, doesn't really look wild



The Bend Oregon First Day Cancel

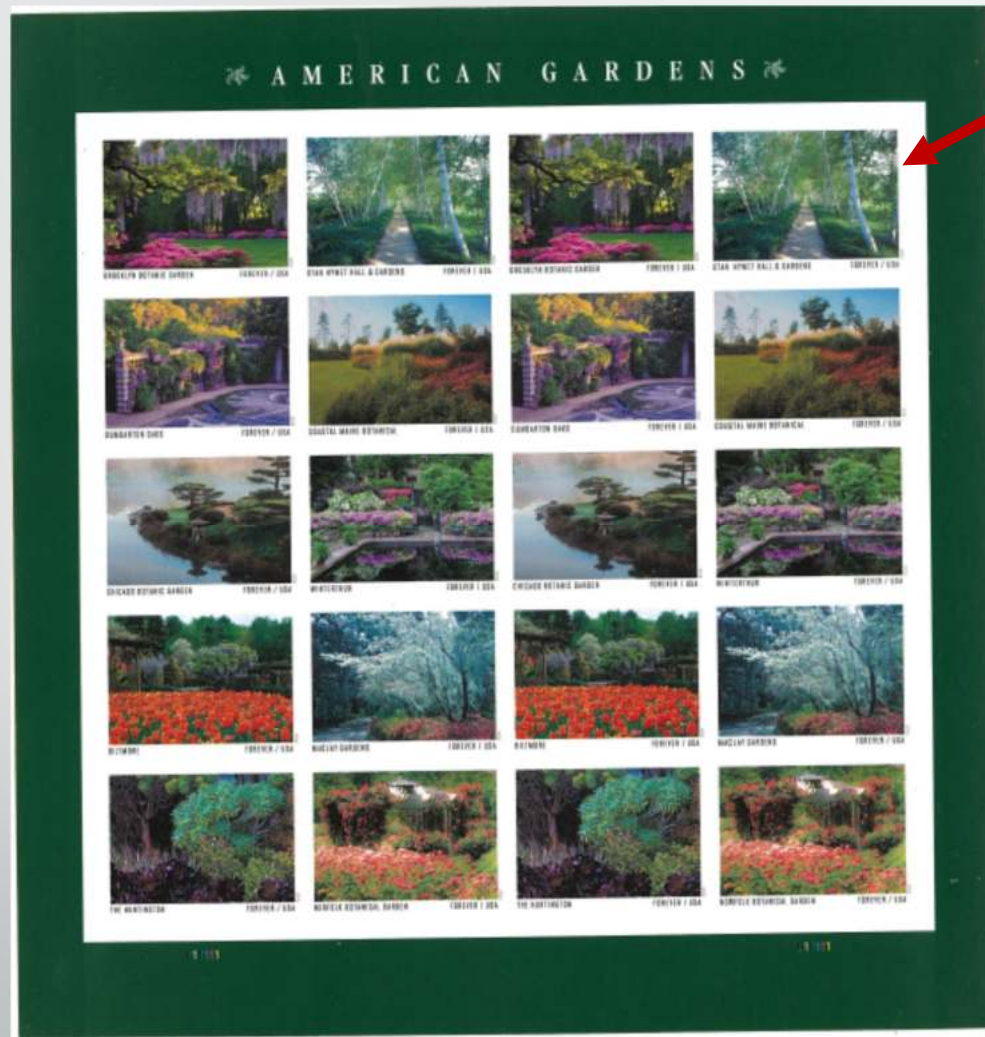
Stamp shows Niobrara River that runs through Wyoming and Nebraska, not Oregon



Enjoy the Great Outdoors

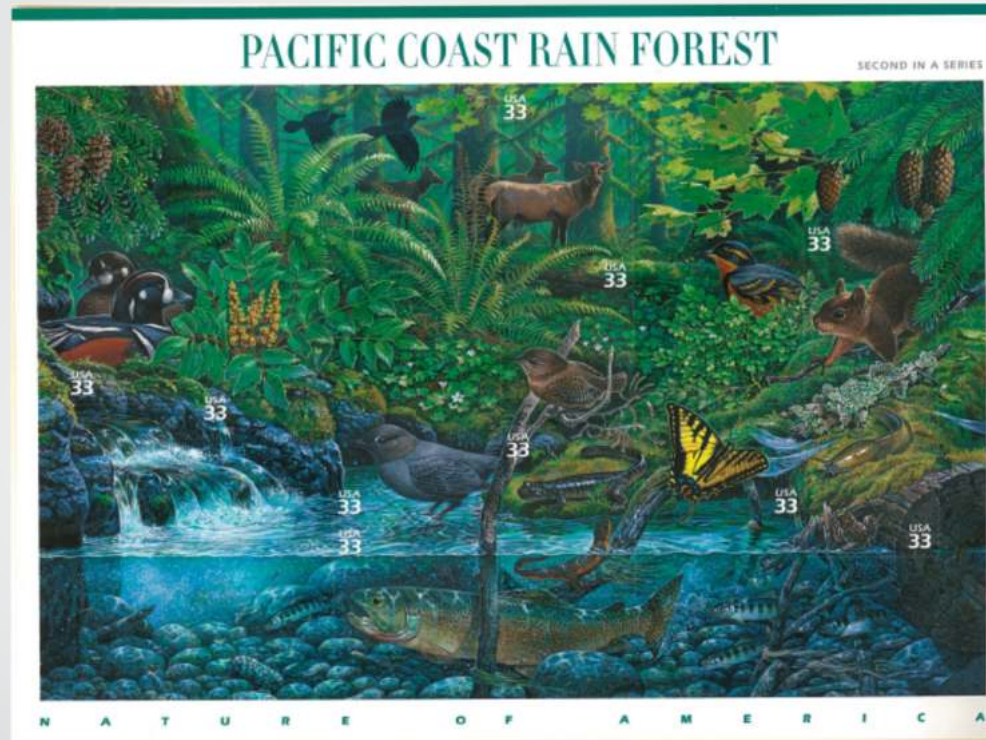
A 2020 Issue Just in
Time to Get Us Off
Our Butts and
Outdoors

Not just scenic, but encouraging
activity



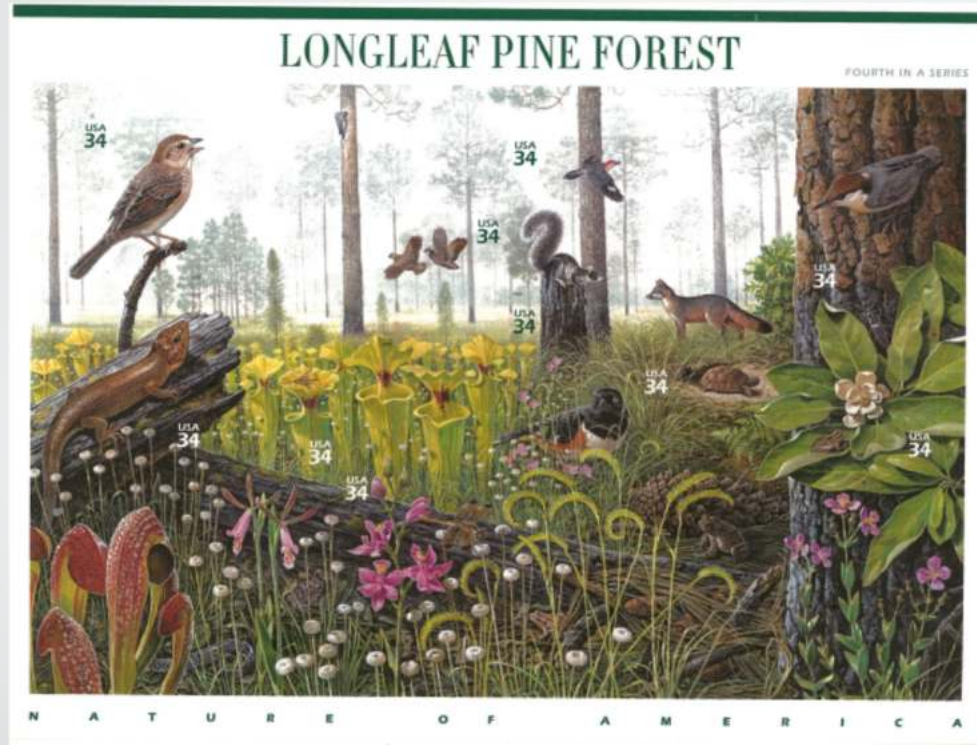
Another 2020 Issue
for American
Gardens

Includes Birch Alley at Stan
Hywet Hall & Gardens, Akron,
Ohio



The 2000 Nature of America Sheet

Second in a long series



The 2002 Nature of America Sheet

Fourth in a long series



From California to New York

We expect the owner is going to tell us about Uncle Sam's Great Mule Railroad

THE PACIFIC RAILROAD.

AIR—*Villikins and his Dinah.*

Say, how would you fancy a trip overland,
By Samuel's Railroad, exceedingly grand;
With mule locomotives for passenger trains,
And kettles for cooking your beans on the Plains?
Chorus—Tu ral lal, lu ral, &c.

The road o'er the mountains in winter 's wet,
And that on the Desert is *billions*, "yod bet;"
The bottom drops out, and the vehicle in,
So much for the efforts of OLD GRANNY GWIN.
Chorus—Tu ral lal, lu ral, &c.

When grass won't afford it, they unhitch the team,
And camp by the road to recruit up the steam:
The far-bucket, silent, would say, could it speak,
"Oh, Railroad Democracy, I've sprung a leak!"
Chorus—Tu ral lal, lu ral, &c.

To scare off the wolves, when they howl on the track,
The brave engineer hits the leaders a crack;
The hungry conductor commences to pray,
When off goes the whiff-lash, and — is to pay.
Chorus—Tu ral lal, lu ral, &c.

They turn out their engines to rest and to feed,
The Indians then muster and raise a stampede,
And away goes the railroad, no person knows where,
Now that 's tremendously grand, I declare.
Chorus—Tu ral lal, lu ral, &c.

They ferry the rivers wherever they cross,
In case of sea-sickness, knock down a lame *hoss*;
The mail agent *romita*, and off goes his hat,
And with it the mail tumbles into the PLATTE.
Chorus—Tu ral lal, lu ral, &c.

By this institution they'll carry our troops,
And LADIES, providing they go without *hoops*;
Agree not to meddle with Mormon affairs,
Or advocate Brigham's *production of hair*.
Chorus—Tu ral lal, lu ral, &c.

Oh, Sammy, oh, Sammy, you know you've done wrong,
To build a MULE RAILROAD, so wonderful long.
Your only show now to get pay for your pains,
Is to *harnesse* your mules, and drive over the Plains.
Chorus—Tu ral lal, lu ral, &c.

ALL DIFFICULTIES SETTLED ACCORDING TO MINERS' LAWS.

[Copyright secured according to Act of Congress.]

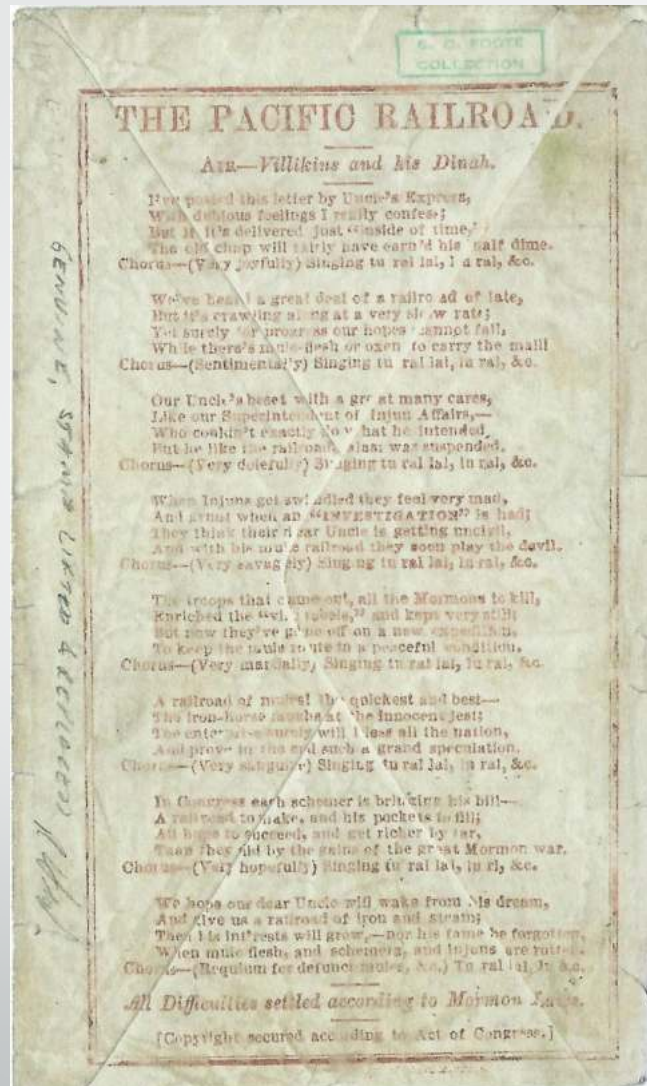
The Reverse of the
Putt's Envelope

Song lyrics and a chorus
apparently known to all




From Utah Territory to Michigan

We expect the owner is going to tell us more about Uncle Sam's Great Mule Railroad



The Reverse of the Sammy's Envelope

If you want to argue about it,
Mormon Law will govern!



Intro to Next Five Items

Owner Comments

- Next five items part of new Slovakia's First Republic exhibit
- Structure will parallel owner's Bohemia & Moravia exhibit
- The covers and cards demonstrate some of the changes in the postal system as borders and political powers also changed
- Hoping to exhibit ten frames in April 2021 at the March Party!



Nine Days After Occupation

"We Are Free" didn't quite turn out that way



Nine Days After Occupation

Owner Comments

- Nazis occupied Sudetenland on 1 Oct 1938 thanks to the "Peace in Our Time" Munich Pact
- Card mailed 9 Oct 1938, Taplice local use
- Taplitz is German spelling of town name
- Franked with 50h Fugner stamp
- Several different overprints used in different parts of Sudetenland
- Cancels are also German – note swastikas



Day After Slovak Parliament Convenes

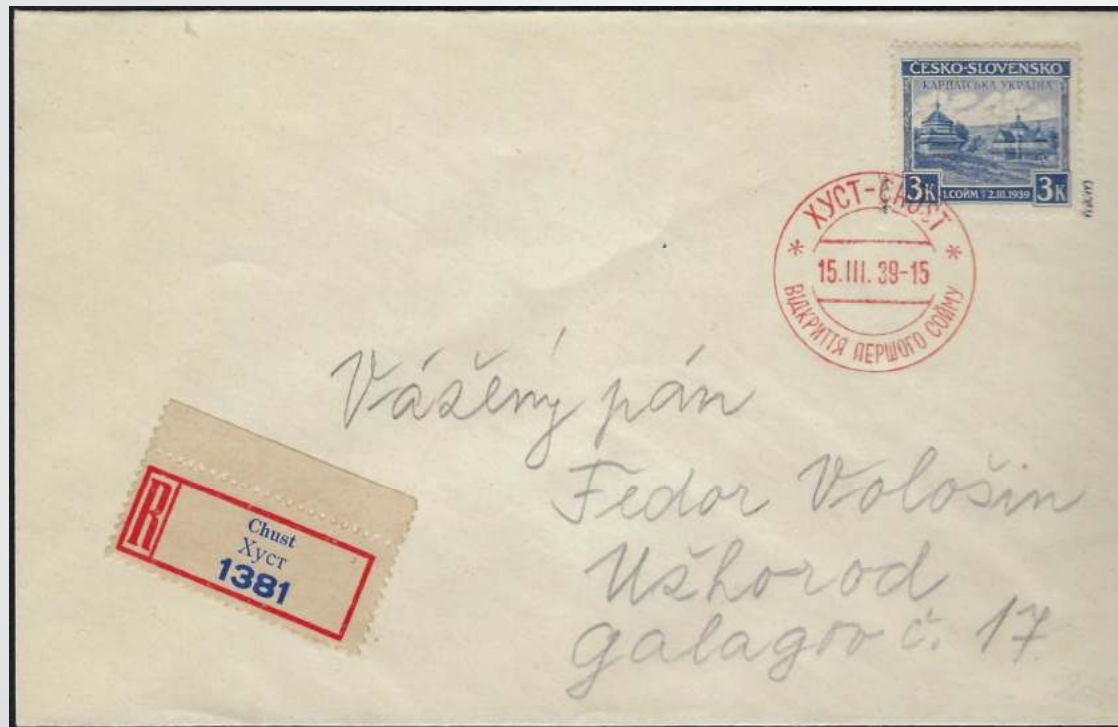
Bratislava to Prague



Day After Slovak Parliament Convenes


Owner Comments

- 18 Jan 1939 Slovak Parliament convenes in Bratislava
- Main discussion is independence from Czechoslovakia
- Registered cover mailed next day to Prague
- Stamp surcharged 300h on 10h 1936 "Castle Ruins at Bratislava" stamp
- Surcharge includes notation that Slovakian Parliament has opened
- Red cancel is commemorative "Autoposta" cancel
- 14 Mar 1939 Slovakia declares independence



Registered Cover Chust to Ušhorod

Carpatho-Ukraine stamp



Registered Cover Chust to Ušhorod


Owner Comments

- 15 Mar 1939 Germany occupies remaining Czech territory west of independent Slovakia
- Result is Protectorate of Bohemia and Moravia
- 15 Mar 1939 Last piece east of Slovakia, Carpatho-Ukraine, declares independence
- Cover mailed 15 Mar 1939, franked with only Carpatho-Ukraine stamp
- Special red cancellation celebrates independence
- 16 Mar 1939 Hungary (with German encouragement) occupies Carpatho-Ukraine
- Independence lasts less than 30 hours



April 1939 Prague to Vienna

Special cancels in Prague and Brno



April 1939 Prague to Vienna

Owner Comments

- 15 Mar 1939 Bohemia-Moravia Protectorate created
- Next few days special cancels created to mark official takeover
- Cover mailed 8 Apr 1939
- Franked with 1935 Stefánik, Masaryk stamps and 1936 Komensky stamp, also 1935 German Hindenberg stamp
- Czech stamps could be used until 15 Dec 1939
- Red cancels are from Prague and Brno
- Editor query: What about postage due?



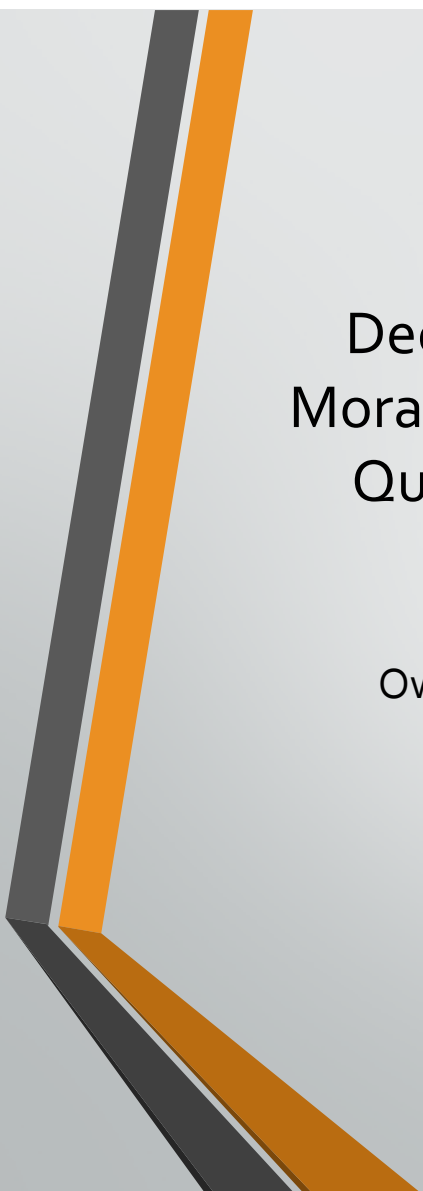
December 1939 Moraska-Ostrova to Quito, Ecuador

What a destination!



December 1939 Moraska-Ostrova to Quito, Ecuador

Reverse – receipt markings and censor seals



December 1939 Moraska-Ostrova to Quito, Ecuador

Owner Comments

- 1 Sep 1939 Germany invades Poland, WWII begins
- Airmail cover mailed 15 Dec 1939
- Franked with 1939-1.50k Bohemia and Moravia stamp (Brno Cathedral) and 1936-10k Czech stamp (Castle Ruins at Bratislava)
- Final day Czech stamps could be used in B-M Protectorate, also in Slovakia unless surcharged as second cover above or with "Slovenský štát" overprint
- Censored in Prague
- Airmail to New York and again to Quito
- Arrived 21 Jan 1940



Some 20th Century Dutch Indies Stamps

Shall we all hum "Little Queenie" while the owner tells us about them?



Some Mid-20th Century French Stamps

Now our sing-along will be "La Marseillaise"



Some Mid-20th Century Australian Stamps

"God Save the Queen" comes to mind, but we are a bit rebellious here in the former colonies




Some Mid-20th Century Canadian Stamps

The Queen, her dad and a few other important people and monuments – “Oh, Canada”



A Very Cool Confederate Wallpaper Cover

Adversity breeds creativity



A Very Cool Confederate Wallpaper Cover

Owner Comments

- Dated 15 Apr (1864), Yorkville, SC
- Stamp is 10 Cents Jefferson Davis (Scott #11)
- Mailed to H.R. Barry, 22nd Regiment, South Carolina Volunteers, Company C
- Care of Capt. Brown, Charleston SC
- Union blockade made Southerners desperate for common items like paper
- Envelopes were reused (turned inside out), made of ledger paper, wallpaper and anything else they could find
- Mail to Confederate soldier makes this unusual



Garfield-Perry Stamp Club

Show and Tell

September 3, 2020

And That Concludes Tonight's Program

Thanks to our contributors, listeners and watchers