



These two covers were addressed to Arthur L. Garford in Cleveland, Ohio, dating in the 1870s. Garford, an 1875 graduate of Elyria High School, became an industrialist in his hometown. He started his career as a cashier and bookkeeper in Cleveland. In 1892 he opened the Garford Manufacturing Co. in Elyria. He invented the first padded bicycle seat, known as the Garford Saddle. Soon success led Garford to start the Automobile and Cycle Parts Co. in 1893 and a series of other companies that eventually led to him manufacturing the luxury Garford automobile line.



TOP: Circular date stamp paired with a duplex with a carved stylized "H."

BOTTOM: Circular date stamp paired with duplex of a circle with randomly inscribed lines.

27 millimeter circular date stamp

In use mid- to late-1870s



Circular date stamp paired with intertwined "US" in 24-millimeter circle. This particular postmark was used with blue and magenta ink.



Circular date stamp in blue paired with killer with geometric markings carved in rubber or wood.

27 millimeter circular date stamp

Month, day, time

In use 1880 to 1883



Paying 1-cent circular rate.

27.5 millimeter circular date stamp

Month, day, time, year

In use 1883-1887

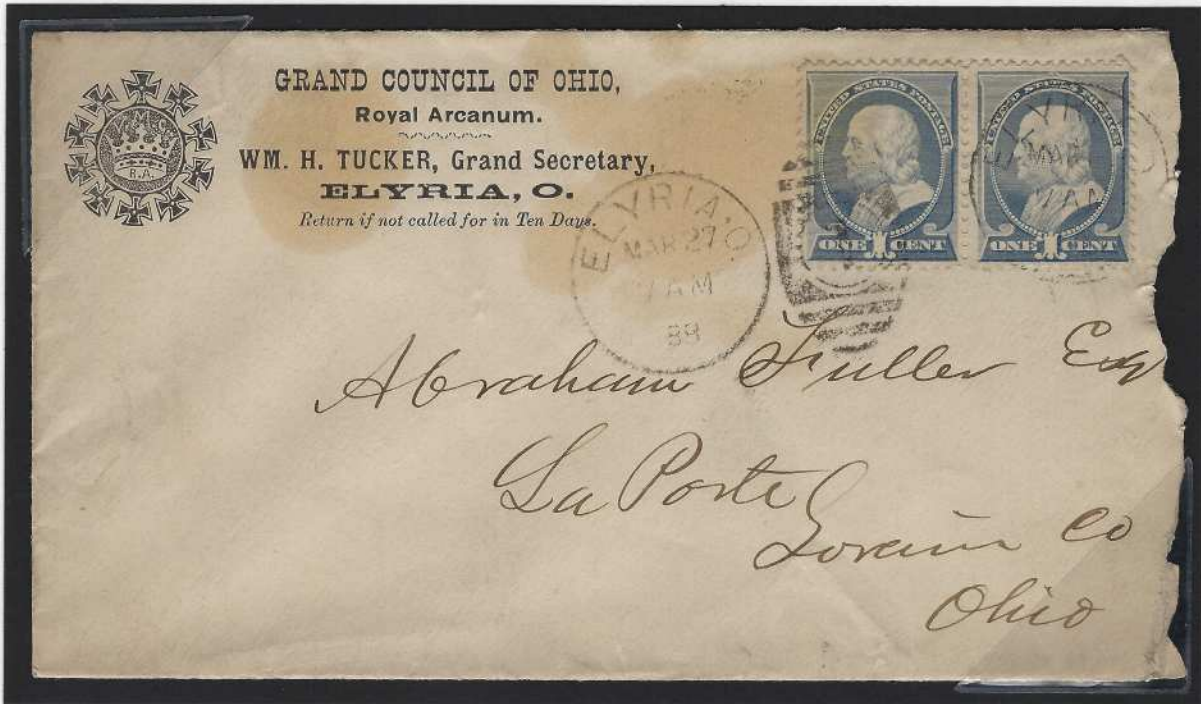


Paying 2-cent rate to Avon or French Creek, Ohio.

26 millimeter circular date stamp with barred oval and numeral 1 in center.

Date, time, year

In use 1888 to 1895



March 27, '88 postmark on cover with 2-cent rate from Grand Council of Ohio, Royal Arcanum to LaPorte, Ohio.



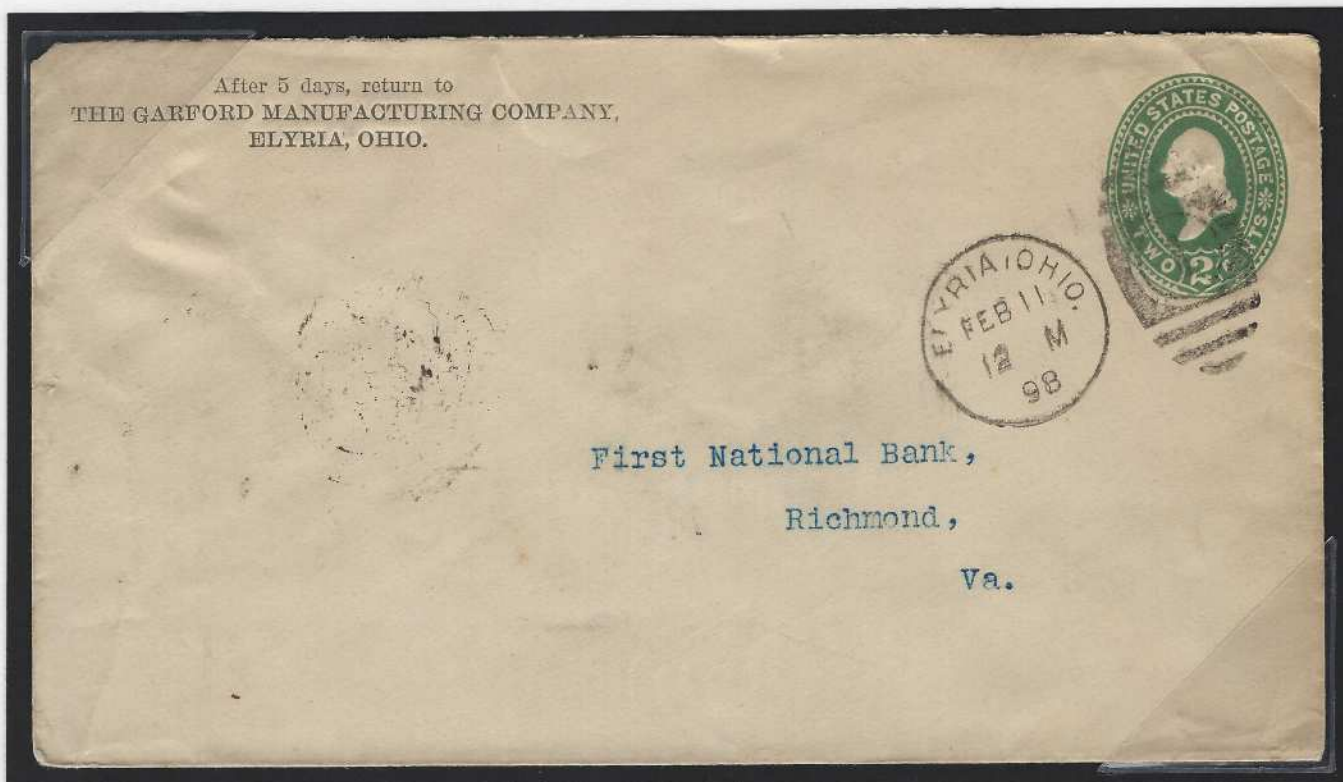
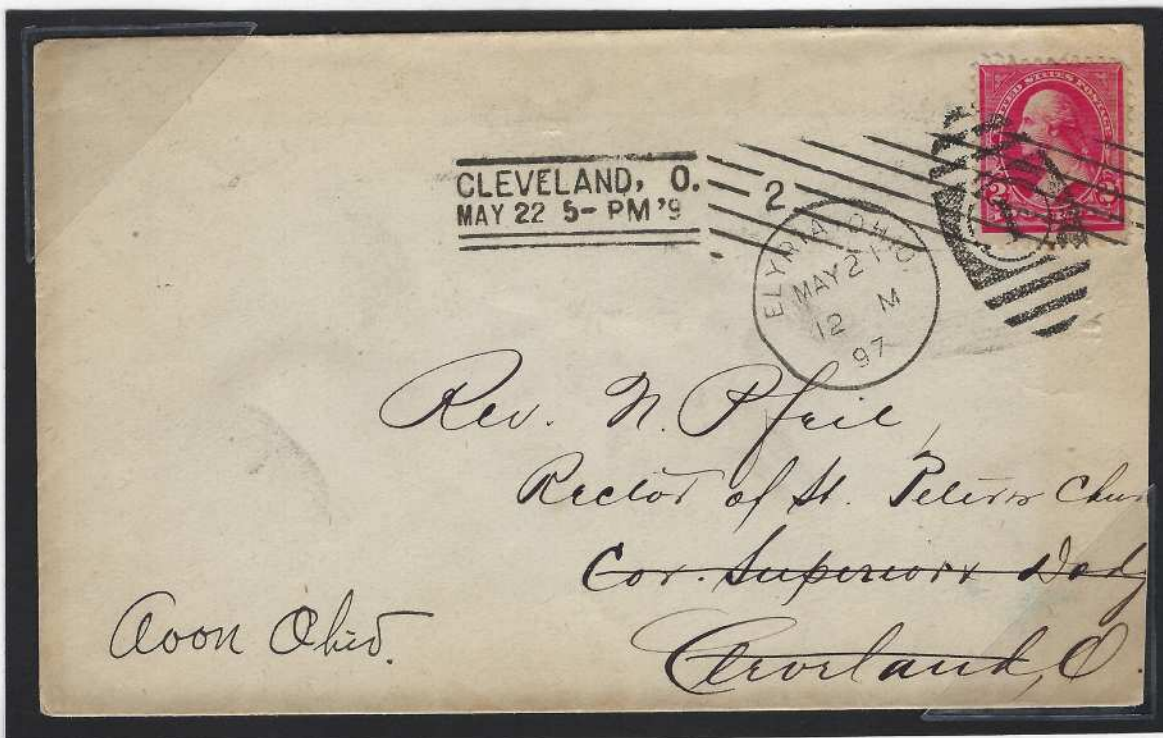
July 30, '88 postmark on cover with 5-cent rate to England.

25 millimeter circular date stamp with barred oval and numeral 1 in center.

Date, time, year

City and state across top

In use late 1880s



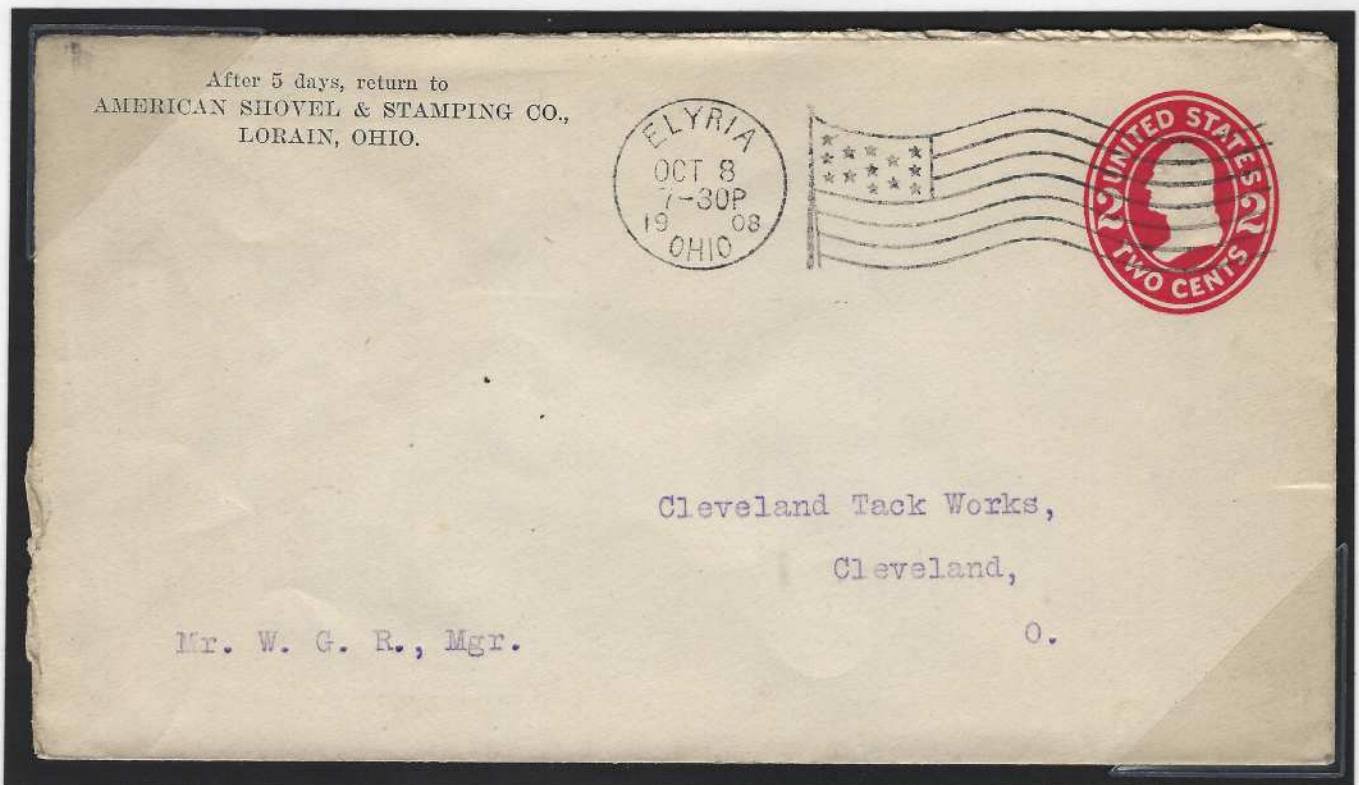
Two examples of usages. The top cover is postmarked May 21, 1897 and sent to Cleveland, but returned to Avon, Ohio, where the priest had been reassigned. The second is from The Garford Manufacturing Co. to First National Bank in Richmond, Virginia, on a postal stationery envelope.

5. Machine Cancels

Flag machine cancels



Type A, first received in March 1899 from the American Postal Machines Co. Seven wavy lines and "1" within the stripes.



A second type was used in the early 20th century without a numeral or letter within the stripes.

International machine cancels

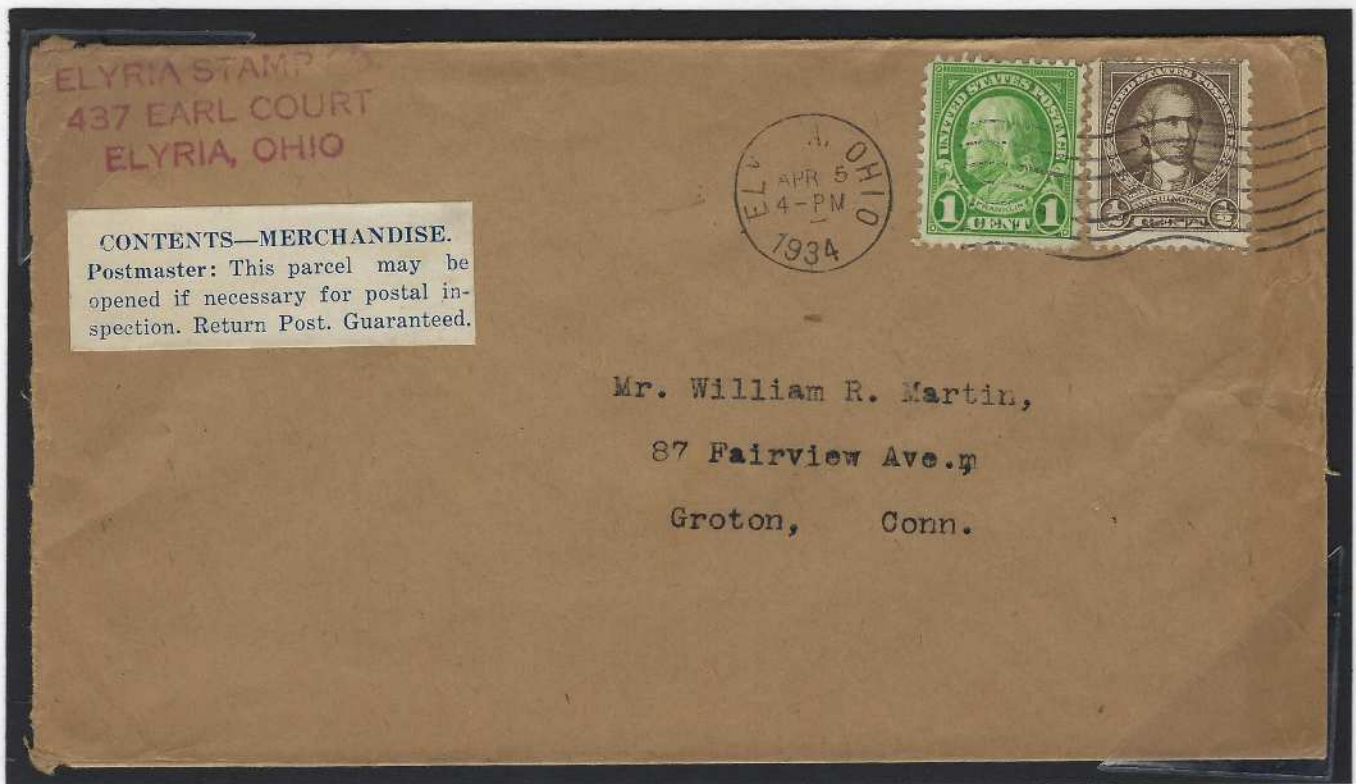
In use 1919 to 1931



Style with six wavy lines from Feb. 13, 1919. Date and time included in postmark and Ohio at bottom.



Similar style, but with seven wavy lines and "1" and "c" within the lines. Example on a post card from Dec. 21, 1923.



A new style was introduced later in the 1930s with the city name and state across the top and widely spaced letters. Also with seven wavy lines.



This example from 1962 was postmarked at Elyria's Parcel Post Annex. Note that the letters in the date stamp are closer together.