

ALLIED MILITARY GOVERNMENT MAIL

USED IN EUROPE INCLUDING ITALY (INCLUDES BARI,
SICILY, NAPLES, VENEZIA GIULIA & TRIESTE), FRANCE
AND GERMANY

Note: Not all Entities are Shown in this Display. Some were only in
existence for a couple of weeks.

Time Frames in Which Mail was Controlled

- Italy (Primarily in Sicily) – 9/7/43 – 6/20/46
- Naples (Italy) – Only in December 1943
- AMG – Bari (Italy) – Only in January 1944
- France – 10/9/44 – 5/12/45
- Germany – 3/19/45 – 10/31/46
- Austria – 6/28/45 – 3/21/46
- Venezia-Giulia – 9/2/1945 – 9/15/1947
- Trieste – A special case – 9/15/1947 – 10/25/1954

30- Centesimi - October 23, 1943



France – 1st Printing – 4 Francs

Note the color for the entire stamp and denomination are the same. This indicates the First Printing. For the second printing, the denomination was printed in black ink. Posted on February 12, 1945.



France – 1st & 2nd Printing

Note BLACK indicia showing
value of the Stamp

Rate was 4 Francs until
February 1, 1945, when it was
increased to 12 Francs.
Item should have been paid at
12 Francs. Clerk did not
catch error.



France 1st & 2nd Printing

Paris to New York City - Sent February 12, 1945

Rated 10 Francs including two first printing 4 Francs and one second printing 2 Francs

Rate increase occurred on February 1, 1945



Identifying Printings for Stamps used in Germany

■ Washington Printing



WASHINGTON PRINTING

NO WHITE TRIANGLES IN THE CORNERS OF THE ARABESQUES.

END OF RIGHT LEG OF "M" IN OVAL HAS A SLIGHT CURVE BUT IS NOT CONCENTRIC WITH THE CURVE OF THE OVAL.

Identifying Printings for Stamps used in Germany

■ London Printing

LONDON PRINTING

THIS PRINTING IS THE EASIEST TO DETECT. THE PERFORATIONS ARE MUCH SMALLER AND FINER THAN ON THE OTHER TWO PRINTINGS. THE LONDON PRINTING WAS PRODUCED BY PHOTOGRAVURE AND HAS A DIFFERENT APPEARANCE THAN THE OTHER TWO PRINTINGS, WHICH WERE OFFSET LITHOGRAPHED.



Identifying Printings for Stamps used in Germany

- Brunswick (Germany) Printing



BRUNSWICK PRINTING

TRIANGLES OF WHITE TO THE RIGHT AND LEFT OF THE ARABESQUES IN THE FOUR CORNERS ADJACENT TO THE OVAL.

END OF RIGHT LEG OF "M" CURVES CONCENTRIC WITH THE OVAL.

German Postal Rates – Part 1

- From the beginning of the period to February 28, 1945
 - *Printed Matter (20-50 grams) - 4 pfennigs*
 - *Printed Matter (50-100 grams) - 8 pfennigs*
 - *Post/Postal Cards – 5 pfennigs (Intracity), 6 pfennigs (Intercity)*
 - *One Page Letters – 8 pfennigs (Intracity), 12 pfennigs (Intercity)*
 - *Post/Postal Cards – 15 pfennigs (Foreign rate)*
 - *Foreign letters – 25 pfennigs*
 - *Registration Fee – 30 pfennigs*
 - *Other rates and services varied but services were limited*

German Postal Rates – Part 2

- From March 1, 1945 to the end of the Period
 - *Post/Postal Cards – 10 pfennigs (Intracity), 12 pfennigs (Intercity)*
 - *Letters (depending upon weight – 16 pfennigs (Intracity), 24 pfennigs (Intercity)*
 - *Registration Fee – 60 pfennigs*
 - *Foreign Destinations – 75 pfennigs*
 - *Other rates and services varied but services were not as limited as earlier*



GERMANY
INTERCITY
POST/POSTAL CARD
PRE-RATE INCREASE
(6 PF.)

Both Stamps Brunswick
Printing

Germany Intercity Post/Postal Card Pre-Rate Increase (6 Pf.)

Posted July 30, 1945 – Overpaid by 2 Pf.

Alle Absender- und Empfängerangaben müssen mit Schreibmaschine oder in großen lateinischen Buchstaben geschrieben sein.

Absender:
Lene Schemmann
Bad. Salzpfle
Wohnort
Wenkenstr. 9
Straße etc.

Language: GERMAN

POSTKARTE
POST CARD

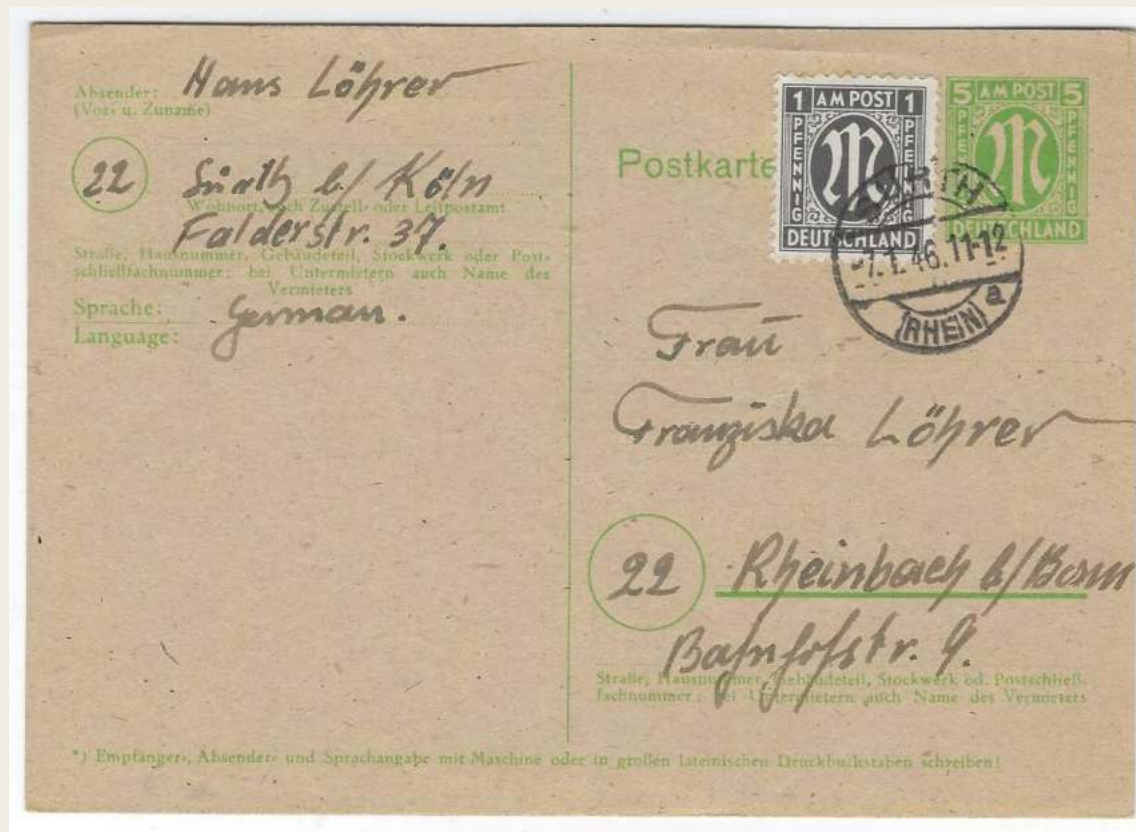
Frau
Grete Bargfeld
Barrien Nr. 132
b. Bremen

II. Bösmann, Druckerei und Verlag, Detmold



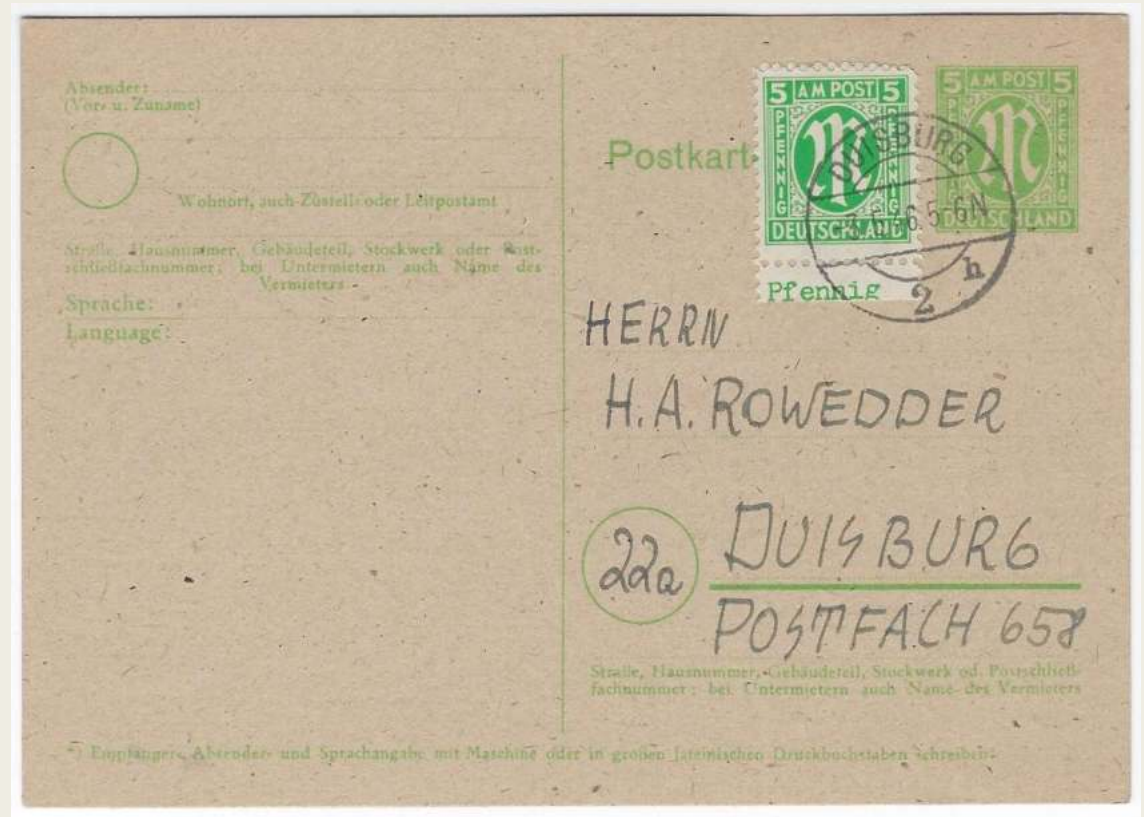
Germany Intercity Post/Postal Card Pre-Rate Increase (6 Pf.)

Postal Card 5 Pf. with 1 Pf. stamp added – Brunswick Printing



Germany Intracity Post/Postal Card Post-Rate Increase (10 Pf.)

Postal Card used in British
Zone with 5 Pf. Stamp
printed in Washington



Germany Intercity Post/Postal Card Post-Rate Increase (12 Pf.)

Postal Card 6 Pf. with 6 Pf. stamp printed in London

Ab sender: *Rud. Warmolt*
(Vor- u. Zuname) *Wassel 74*
über Seinde
Wohnort, auch Zustelle oder Leitpostamt

20
Straße, Hausnummer, Gebäudeteil, Stockwerk oder Post-
schließfachnummer; bei Untermietern auch Name des
Vermieters
Sprache: *deutsch*
Language:

Postkarte

/Herrn
Karl-Heinz Hering

16
franz. *Mainz / Rh.*
Ehrhardstr. 9
Straße, Hausnummer, Gebäudeteil, Stockwerk od. Postschließ-
fachnummer; bei Untermietern auch Name des Vermieters

*) Empfänger, Absender und Sprachangabe mit Maschine oder in großen lateinischen Druckbuchstaben schreiben!

Germany Intercity
Post/Postal Card
Post-Rate Increase
(12 Pf.)

Posted 4 days after rate
increase – Note Postal Card
indicia – Stamp added is
London printing



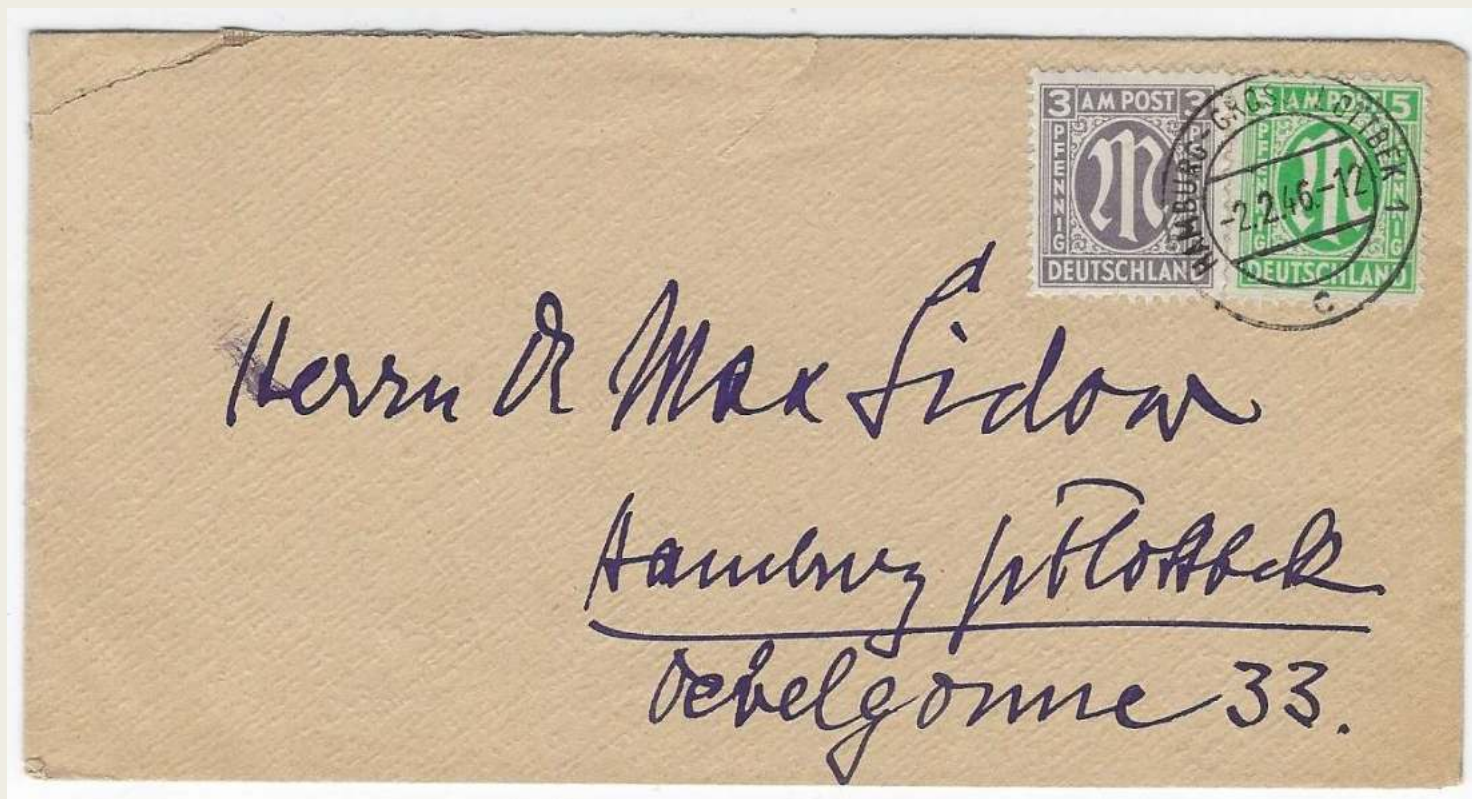
Germany Foreign Post/Postal Card Pre-Rate Increase (15 Pf.)

- POW Mail – Postal Card indicia show 5 pf. – London printing added value (12 Pf.) and overpaid by 2 Pf.



Intracity Domestic Mail – 8 Pfennigs – Pre-March 1, 1946

Used within Hamburg, All values Brunswick Printing



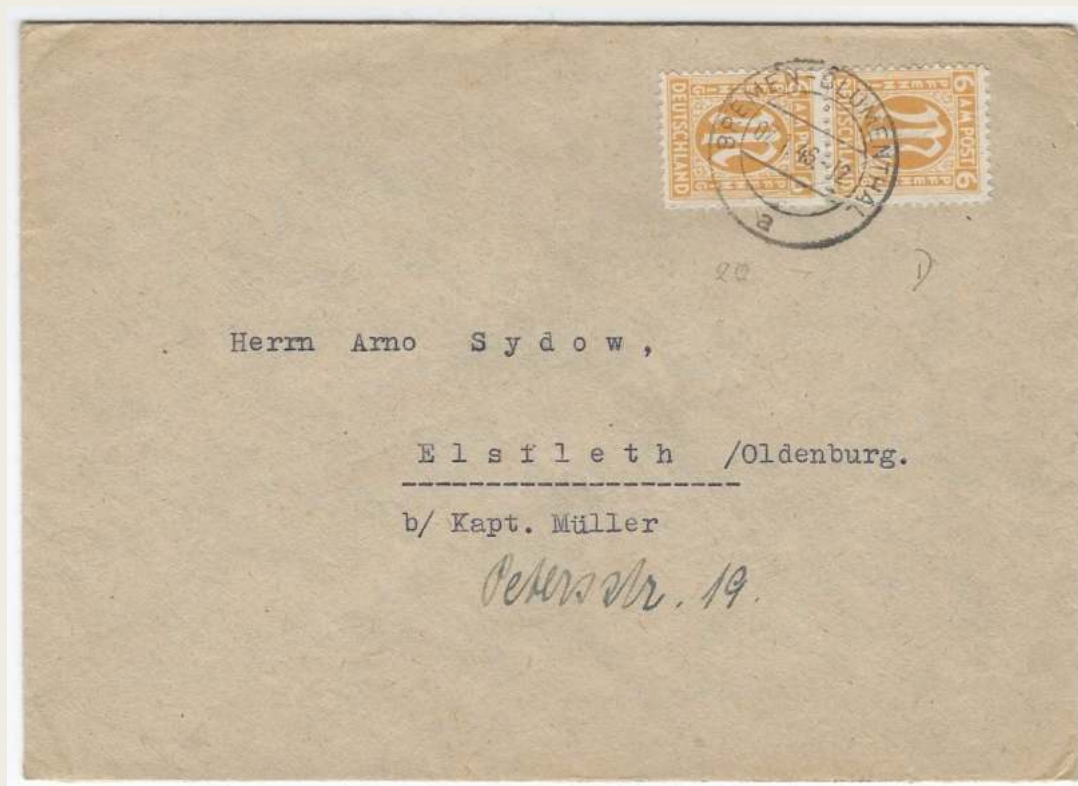
Germany Intercity Domestic Mail Pre-Rate Increase (12 Pf.)

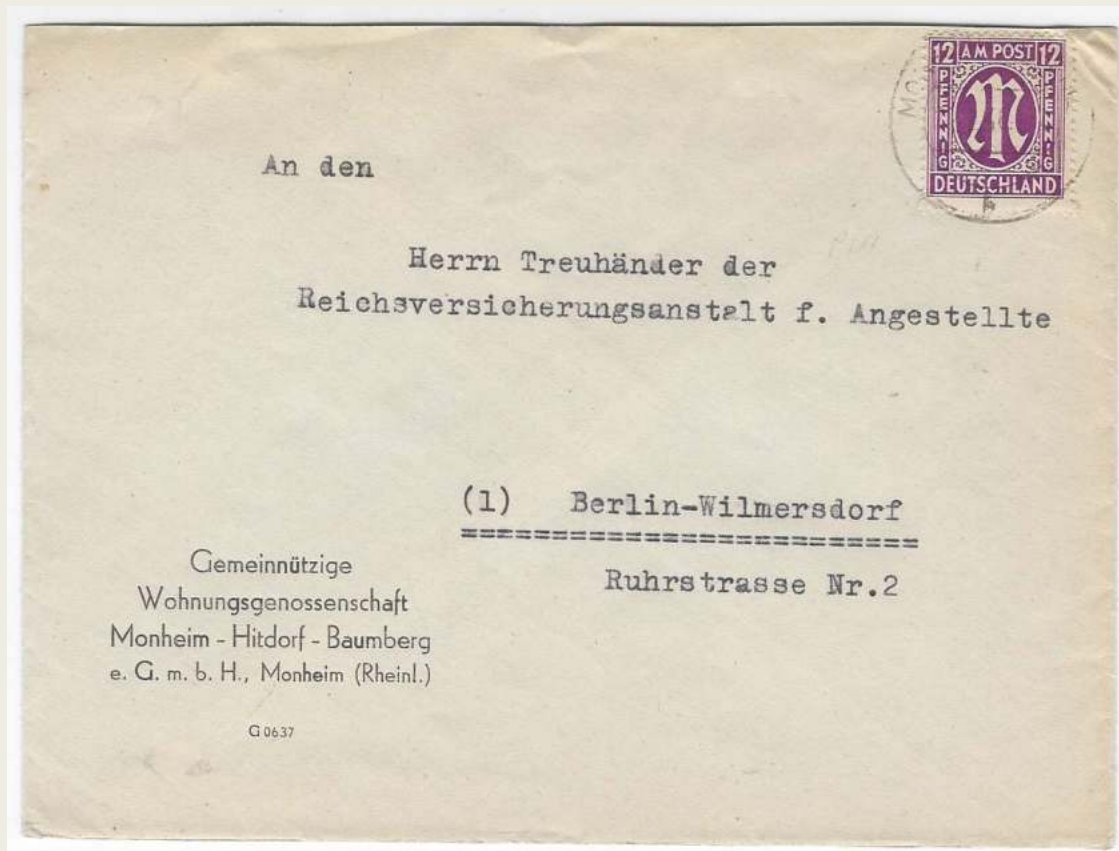
Used in Lubeck – Posted February 11, 1946 – 8 Pf. US Printing, 4 Pf.
British Printing



Germany Intercity Domestic Mail Pre-Rate Increase (12 Pf.)

Used in Bremen – Brunswick Printing





Germany Intercity
Domestic Mail
Pre-Rate Increase (12 Pf.)

From Monheim to Berlin 12 Pf.
– London Printing

Germany Intercity Domestic Mail Pre-Rate Increase (12 Pf.) - Censored

Posted February 26, 1946 –
All values are printed in
Brunswick



Germany Intercity Domestic Mail Pre-Rate Increase (42 Pf.) – Registered Mail

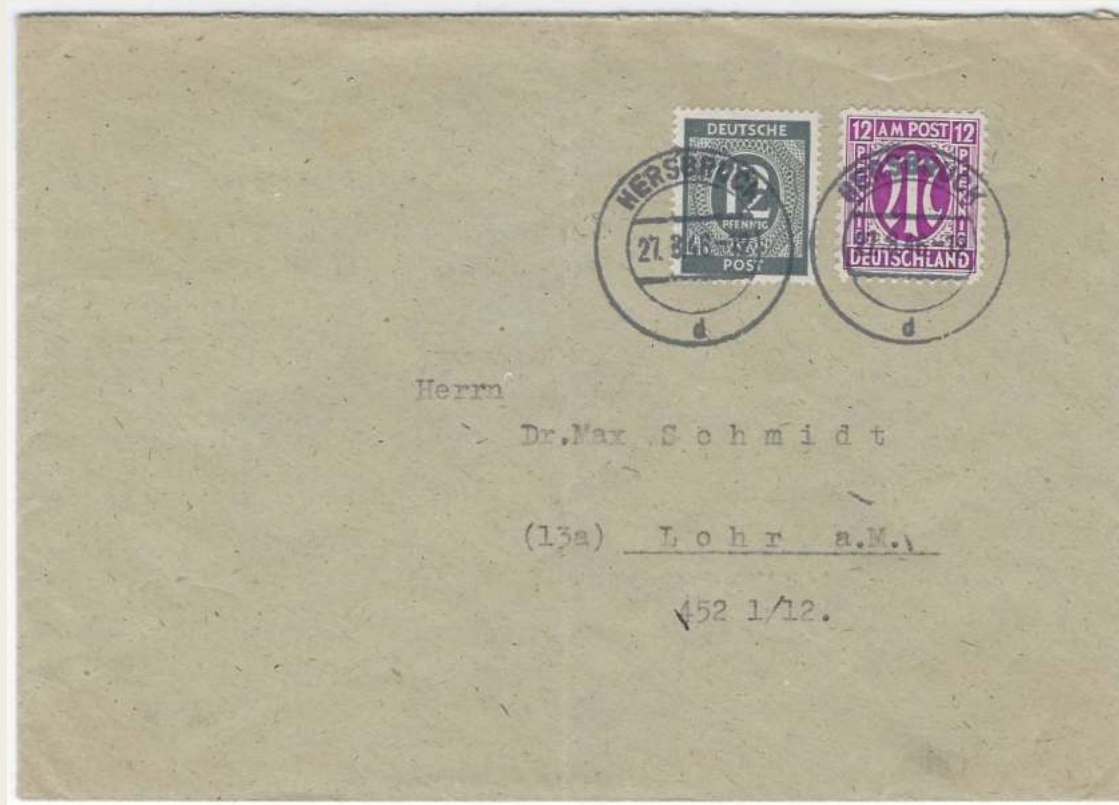
Rate 12 Pf. Postage + 30 Pf.
Registration – Brunswick Printing



Germany Intracity Domestic Mail Post-Rate Increase (16 Pf.)

Posted April 27, 1946 – All values Brunswick Printing





Germany Intercity Domestic Mail Mixed Values Post- Rate Increase

1946 Numerical Issue added to
AMG Issue - Washington
Printing

Germany Intercity Domestic Mail Pre-Rate Increase - Registered (42 Pf.)- Overpaid 2 Pf.

Bad Segeberg to Hamburg – Rate 12 Pf. Postage + 30 Pf. Registration – 6 & 12 Pf. Stamps
London Printing, 8 Pf. Stamp Washington Printing



Germany Intercity Domestic Mail Post-Rate Increase (24 Pf.)

Leer to Osnabrück – All values are London Printing



Germany Intracity Registered Domestic Mail Post-Rate Increase (76 Pf.)

16 Pf. Postage + 60 Pf. Registration – 30 & 40 Pf. Brunswick printing & 6 Pf. London printing



Germany Intercity Registered Domestic Mail Post-Rate Increase (84 Pf.)

Bergneustadt to Hamburg – 24 Pf. Postage + 60 Pf. Registration – Brunswick Printings



Germany Foreign Mail Post-Rate Increase (75 Pf.)

To Indianapolis – Censored Mail
posted June 11, 1946 – All values
Washington Printing



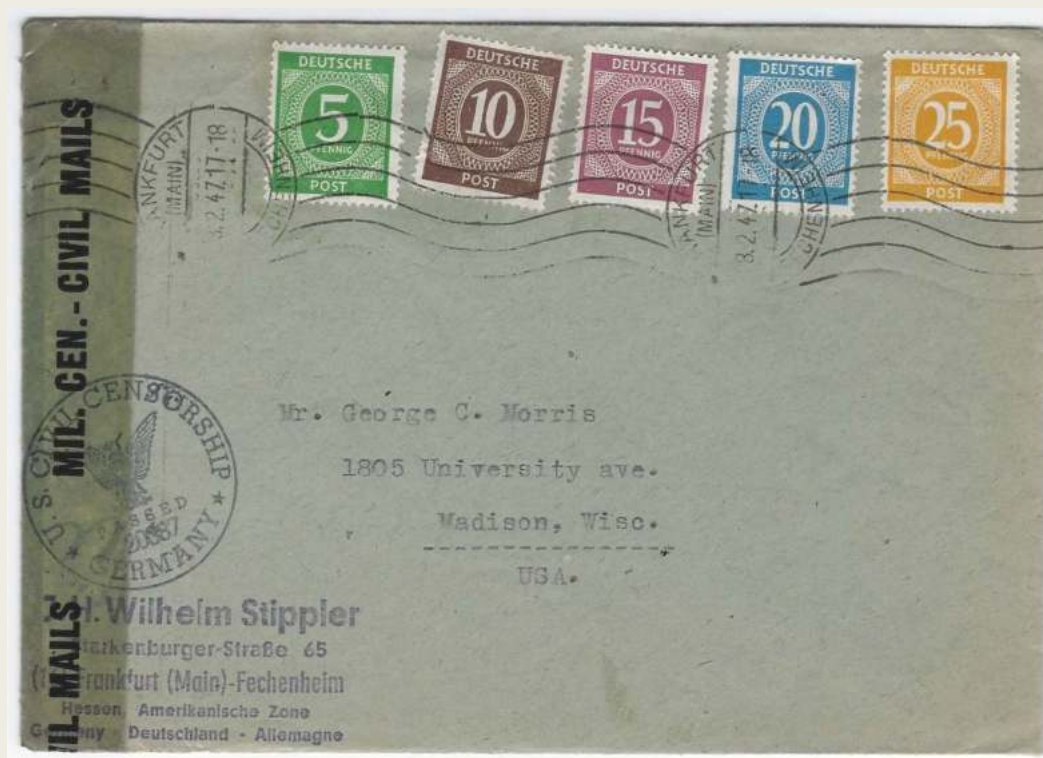
Germany Foreign Mail Post-Rate Increase (75 Pf.)

- To Logansport, IN – Censored Mail – All values, Brunswick Printing – Forwarded to Ann Arbor for additional 3 cents (not needed)



Although still considered AMG mail, 1946 Numeral Issue
paid correct rate (75 Pf.) to Foreign Destination

Censored by military censor – All values are from Numeral Issue



Germany – French Zone – Post Card

Posted in the French Zone from Trossingen to Berlin April 28, 1948
20 Pfennigs – Note fancy cancel from business
This card is promoting business from the Arnold Hohner business



Germany – Soviet Zone

Posted in Sebnitz on January 1,
1946 to Berlin at rate of 8
pfennigs.

Note that pair is not perforated





Germany – Soviet Zone

Sent from Soviet Zone
(unidentifiable) on (date
unreadable) to Berlin.

Note rate of 12 pfennigs, so
cover was mailed after rate
increase. Stamps are
perforated.

Germany – Soviet Zone Wrapper for some papers or documents



Posted in Dresden January 1,
1946

Registered Mail – 42 Pfennigs

Note all stamps are perforated

AMG Currency



50 Pfennigs (Funfzig Pfennig)

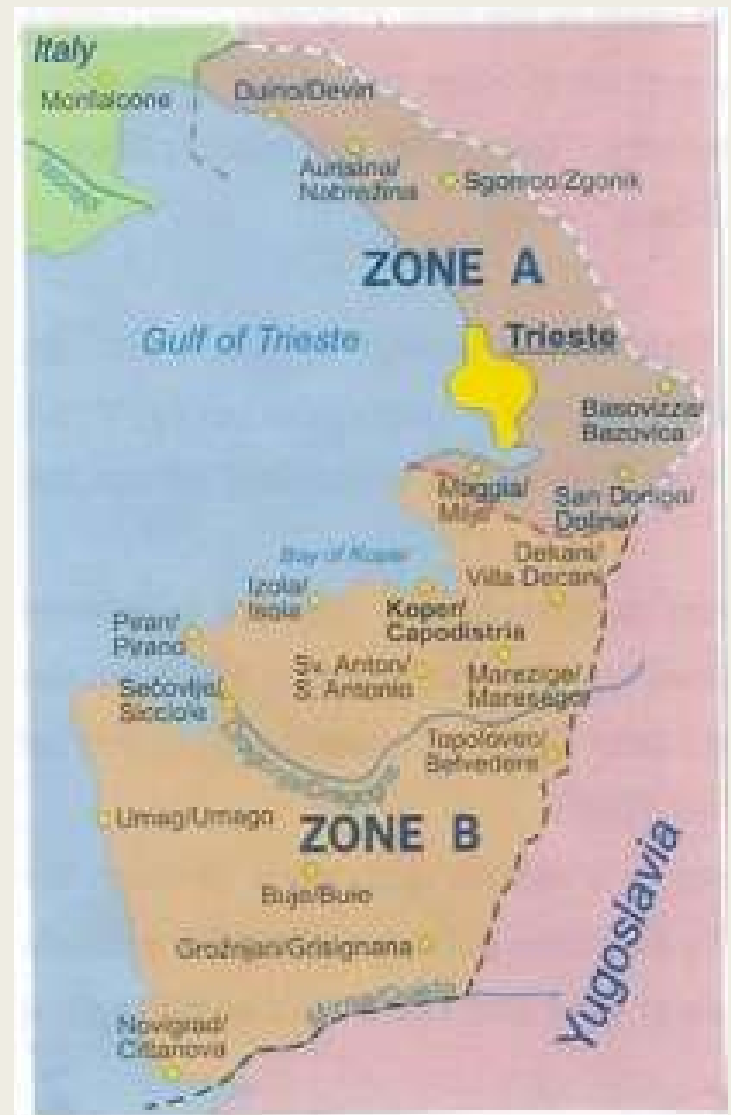


One Mark (Eine Mark)

Trieste Area, showing Zones A & B

Zone A occupied by Allied
Military Forces
&
Zone B occupied by
Yugoslavian
Forces

The entire area was eventually returned entirely to
Italy as of 1954.



Trieste to Trieste (Philatelic?)

Posted September 1, 1947
note all 4 stamps are error – the first
has inverted overprint and the
next three are all doubled overprints



AMG/VG – Special Delivery

4 Lire postage + 10 Lire for Special Delivery – Note censor tape
Mailed October to Firenze (Florence) on October 16, 1946



Posted in Trieste – Controlled by Yugoslavia

Mailed June 15, 1945, and sent within the area known as Zone B
Note the overprints indicating semipostal stamps



Trieste – Early Cover – Stamps Released after October 1, 1947 15 Lire

Posted in Trieste and send Intracity



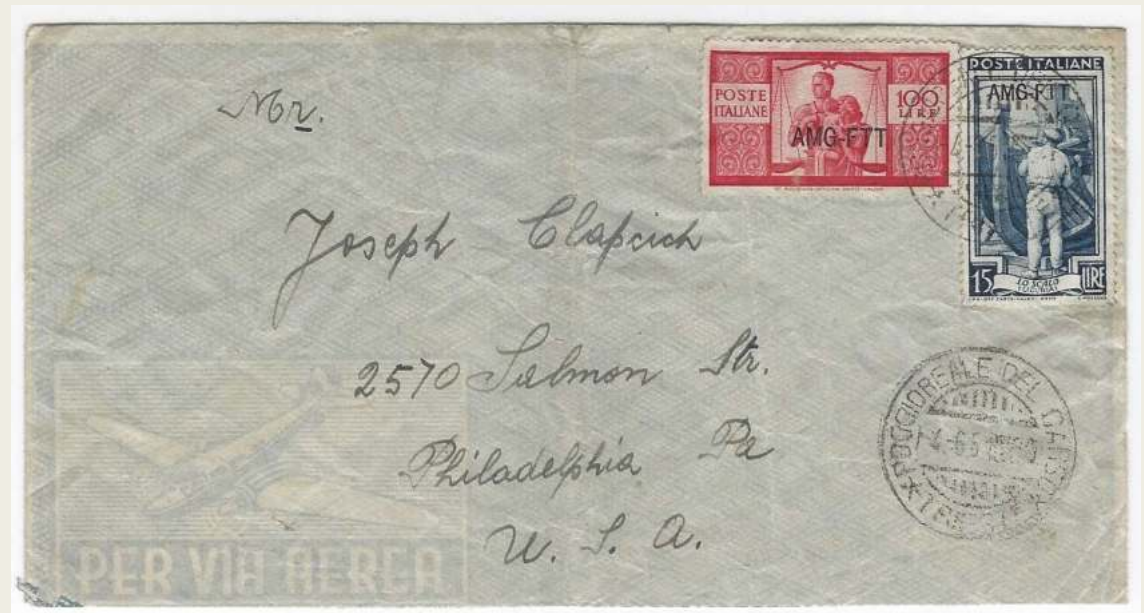
Trieste to Rome – Postal Card

8 Lire posted on November 13, 1947



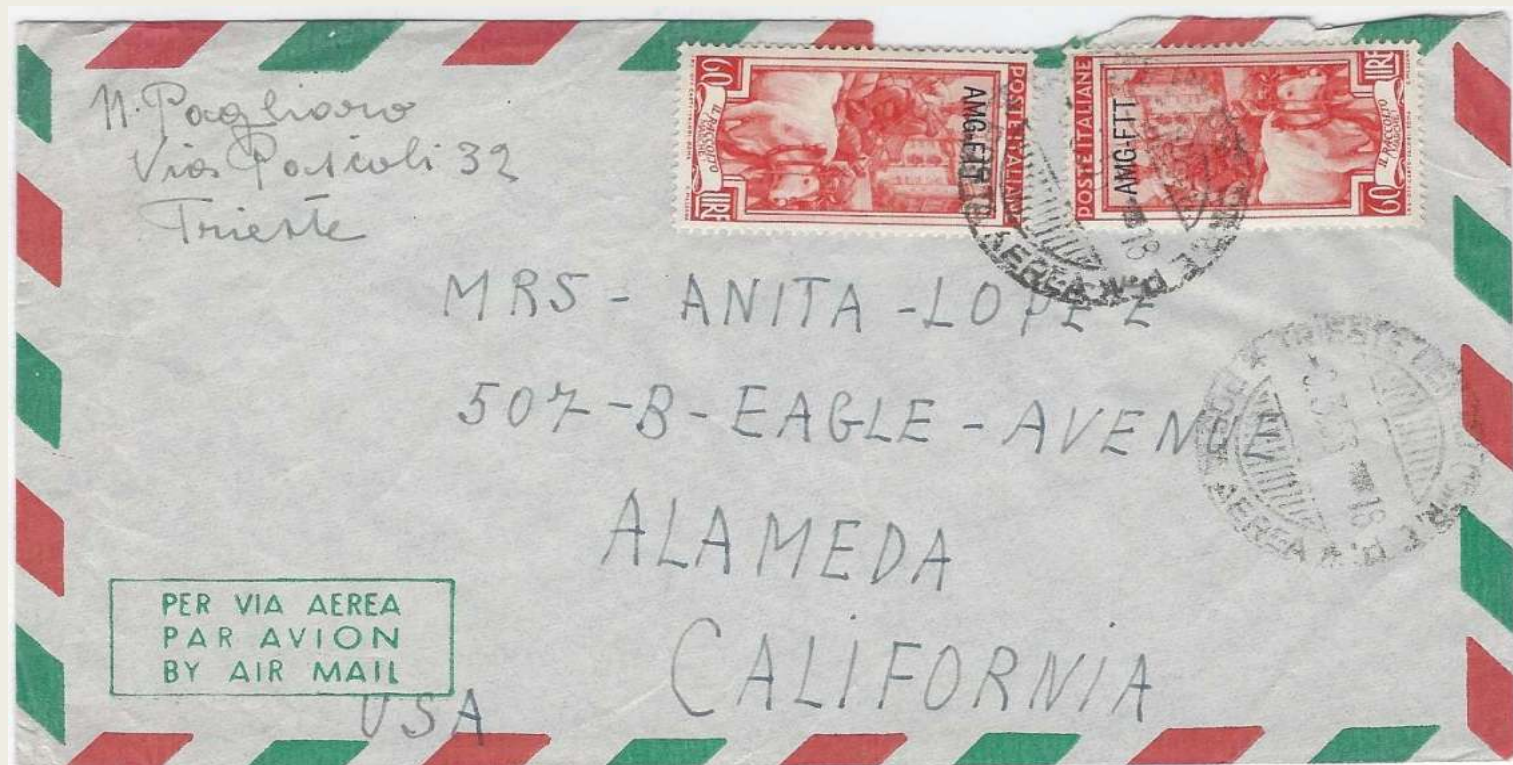
Overprint AMG-FTT
signifies Allied
Military
Government-Free
Territory of Trieste

Foreign Destination – Rate 115
Lira – Trieste used
overprinted Italian Stamps
Sent June 4, 1951



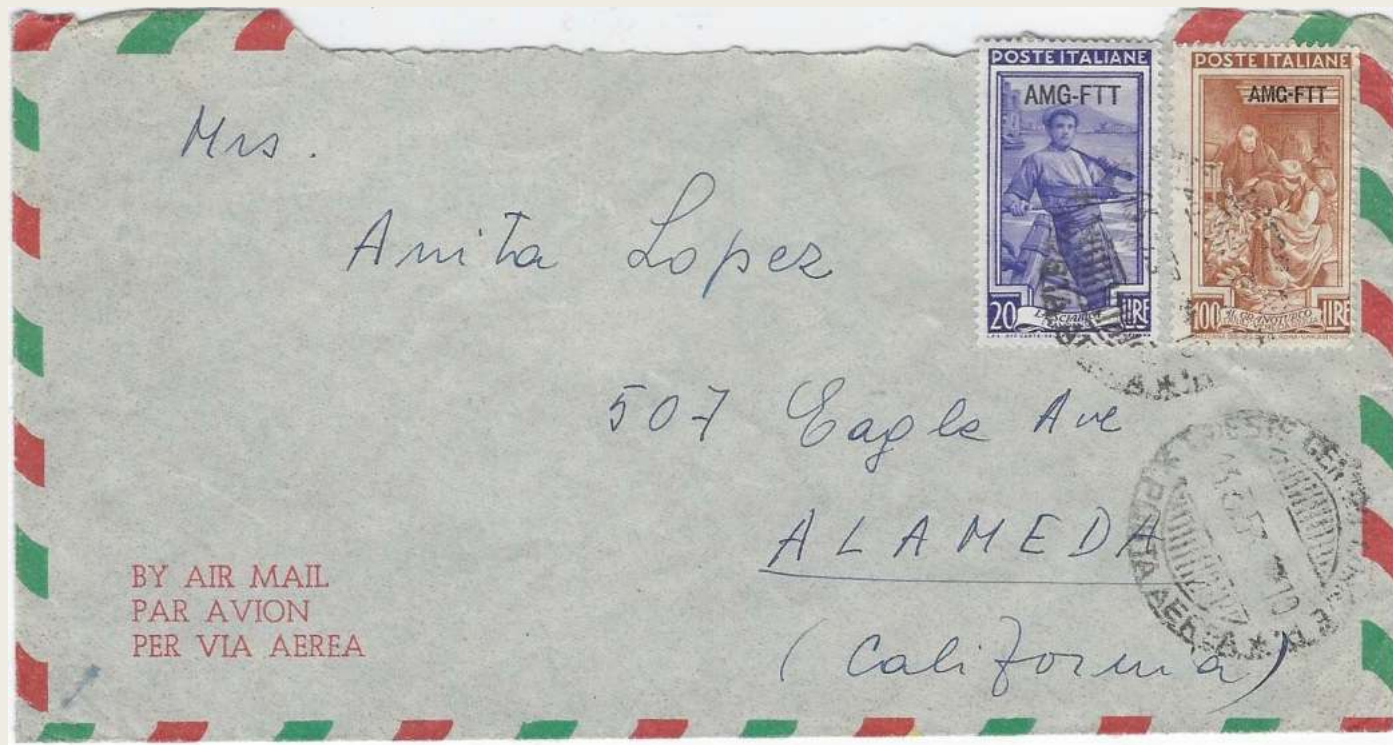
Trieste – Foreign Destination – Date sent unclear but in March
1953 – Stamps from Workers Series

Trieste to California – Rate 120 Lire (Air Mail)



Trieste – Foreign Destination – Date sent believed to be May 6, 1953

Trieste to California – Rate: 120 Lire (Air Mail)



The End – Thanks for Viewing

Much of the information contained herein was obtained from information and publications from Joseph V. Bush, Inc. who was the motivator for my interest in AMG stamps and covers.

I am open to any questions about this program and will try my best to answer them.